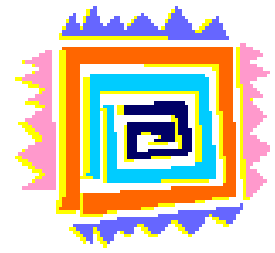


Cache COUNTY



demographic and economic profile

December 2004

*Utah Department of Workforce Services
Workforce Information*



Cache County

Demographic and Economic Profile Updated Date

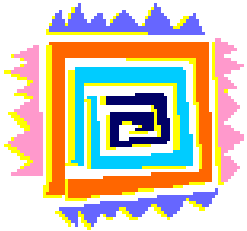
This is a web-only publication. If a hard copy is desired, please print one from the following website:

<http://jobs.utah.gov/wi>

Click on "State and County Information" then "[Cache County](#)"

*[John T. Mathews](#)
Regional Economist
Utah Department of Workforce Services
[140 East 300 South](#)
[Salt Lake City, UT 84111](#)
[801 526-9467](#)
johnmathews@utah.gov*

Table of Contents



- Links 7
- Summary 9
- Population Profile 11
- Employment Profile 19
- Wage and Income Profile 29
- Other Economic Indicators 37
- Data Profile 43

- State of Utah and Cache County Population 45
- Cache County Population by City 46
- Cache County Ethnic/Minority Population 47
- Cache County Nonfarm Jobs by Industry 48
- Cache County Agricultural Census 49
- Cache County Firms by Size 49
- Cache County Labor Force and Unemployment Rates 50
- Census Profile, Cache County, Utah, U.S. 51
- Cache County Authorized Construction 54
- Cache County Gross Taxable Sales 58



For more economic and demographic information about **Cache** County, check out the following internet websites:

Current Economic Data	<i>http://jobs.utah.gov/wi; click on "County and Local Information" then Cache County</i>
Occupational Wages	<i>http://jobs.utah.gov/wi; click on "Income and Wages"</i>
Occupational Projections	<i>http://jobs.utah.gov/wi; click on "Career Exploration"</i>
Census 2000 Data	<i>http://factfinder.census.gov/</i>
Population/Projection Data	<i>http://www.governor.state.ut.us/dea/</i>
Construction Data	<i>http://www.business.utah.edu/BEBR/conreport.html</i>
Sales and Tax Data	<i>http://tax.utah.gov/esu/</i>
Travel/Tourism Impacts	<i>http://travel.utah.gov/index.html</i>
Agricultural Census	<i>http://www.usda.gov/nass/</i>
Income Data	<i>http://www.bea.doc.gov/bea/regional/statelocal.htm</i>
Poverty Data	<i>http://www.census.gov/hhes/www/poverty.html</i>



Summary

Cache County enjoyed the boom years of the 1990's with high job growth rates and population increases. When the nation and state were struck with a recession at the turn of the new century, the county felt the tugs of the downturn, but managed to avoid any real adverse effects. Currently, population growth continues to be robust as does the creation in new jobs. The unemployment rate remained below that of the state and the nation.

This economic profile presents much information about Cache County (population, income, jobs, other economic indicators), in both chart and table form. It compares the county with the state and the nation in many instances. At the end of the profile is the Data Profile, a set of tables available for those "data-oriented" individuals for their use in studying the county.

Population

Population in the county has increased by 30 percent between 1990 and 2000, exactly the same as the state average. Cache County added over 21,000 to its population over the decade, not surprising because of the accelerating economic activity in the county and the state during the booming 1990's.

The natural increase in the population was augmented by positive net-inmigration during the 1990's. Net-outmigration, however, occurred in 2002 as the county felt some of the economic downturn.

Cache County's population is concentrated in Logan City, which has six times as many residents as any other city in the valley. Smithfield (7,900), Hyrum (6,300), and North Logan (5,200) are the next largest incorporated cities.

In terms of the age of individuals, the county has significantly more persons in the 44-years-or-younger age groups than does the state or the nation. Part of this "youngness" is attributable to the students at USU.

Demographics

One of the more noticeable changes over the past decade is the increase in Cache County's Hispanic population. In 1990, only 2.5 percent of the county's population was Hispanic. By 2000, that share had more than doubled to 6.3 percent. The percent of total population comprised of Hispanics in Utah in 2000 was 9 percent. In terms of actual numbers, the Hispanic population increased to 5,800 in 2000 from 1,800 in 1990. Ninety-two percent of the population in Cache County in 2000 was white. Hispanics were second with 6.3 percent followed by the Asian group with 2 percent.

The median age of the population in the county in 2000 was 23.9 years, which makes Cache significantly younger than the state, with an median age of 27.1 years. The U.S. median age is about 36 years.

On the education front, Cache County's percent of the population with high school diplomas or college degrees exceed the U.S. and the state, reflecting the highly educated population of the county, and, of course, the presence of Utah State University and its effect on the educational demographics.

In Cache County, nine out of every ten persons 25 years old and older graduated from high school in the year 2000. This was a shade higher than the 89 percent figure for Utah as a whole, but a clear 10 percent improvement from the 80 percent national average.

For those persons with at least a bachelor's degree, Cache County again led the way with nearly a third (32 percent) of the population holding a sheepskin. The county, being home of USU, has a higher proportion of college educated populous than all other counties, with the exception of the other university-impacted Utah County. At the national level, the proportion of the population age 25 plus was only 24 percent. The state average was just above that with 26 percent of all Utahns with a bachelor's degree or more.

The Labor Market

In 2003, Cache County's job growth was 2.9 percent compared to 2002. Over the 13-year period from 1990 to 2003, the county experienced a whopping 4.4 percent average annual rate of growth in employment. And this includes the recent recession. During that same time, the Utah labor market added new jobs at a healthy 3.1 percent per year pace, and the nation grew slowly at 1.3 percent annually. The boom years in Cache County, Utah, the U.S. were 1993 and 1994 when Cache peaked at a 6 percent rate of growth. Utah's pace reached the same level, but not until 1994. The nation peaked at 3.1 percent also in 1994. After these peaks the country's economic expansion slowed until the turn of the century when the economy slid into a recession starting in late 2000. The already teetering economy toppled into a deeper trough as the events of September 11, 2001 played out.

The economies of Cache County, the state, and the nation are moving into full recovery mode now. Cache County's job growth rate ranks ninth in the state. There are 12 counties in Utah that didn't add any new jobs in 2003.

Seventy percent of all employment in Cache County is concentrated in just four of 12 industry sectors. Clearly, one-fourth of all employment is in government as USU's economic impact is felt in the local economy. Manufacturing claims an 18 percent piece of the job's pie with activity distributed between food processing, recreational equipment manufacturing, printing, and other goods-producing enterprises. After manufacturing, professional and business services adds another 16 percent of the total and retail and wholesale trade contribute 13 percent.

During 2003, only three of the 12 major industries in the county experienced job losses, and those losses were minor compared to the total number of jobs. Utah, on the other hand, still continued to shed jobs during the year, albeit not to the extent of the losses in 2002.

Unemployment in Cache County has fluctuated roughly between 5 and 7 percent over the last decade. The good news for Cache in 2003 was that it had the lowest annual average rate of unemployment of any county in the state with 3.7 percent.

Wages and Income

The average monthly wage for all workers in Cache County in 2003 was \$1,980. For 2003, the county's average wage was 78 percent of the state average. The average wage of \$1,980 is a nominal increase of 54 percent from the \$1,289 in 1980. However, when adjusted for inflation, real wages in the county increased only 9 percent since 1980.

Wages vary by the industry the worker is employed in. Higher paying industries in the county, those paying over \$2,200, were manufacturing, financial activities, information, and government. Mining is the highest-paying. The lowest paying is the leisure and hospitality industry sector.

Industries that contributed the most payroll dollars in Cache County were government (\$282 million) and manufacturing (\$249 million).

Median family income (wages, interest, rental income, business income, and Social Security) for the county was lower than both the state or national average. Cache's median income in 1999 was \$44,453, compared with the state at \$51,022 and the U.S. with \$50,046. Forty-four percent of all income was generated from those families earning between \$25,000 and \$75,000.

Other indicators

The value of dwelling permits issued in Cache County during 2003 jumped by 24 percent. New permitted dwelling units also increased significantly, from 614 in 2002 to 831 in 2003. Non-residential permit valuation also jumped by \$10 million. During 2003, Logan City claimed the highest number of permits (300), by about a three-to-one margin over Nibley, the next largest contributor of permits.

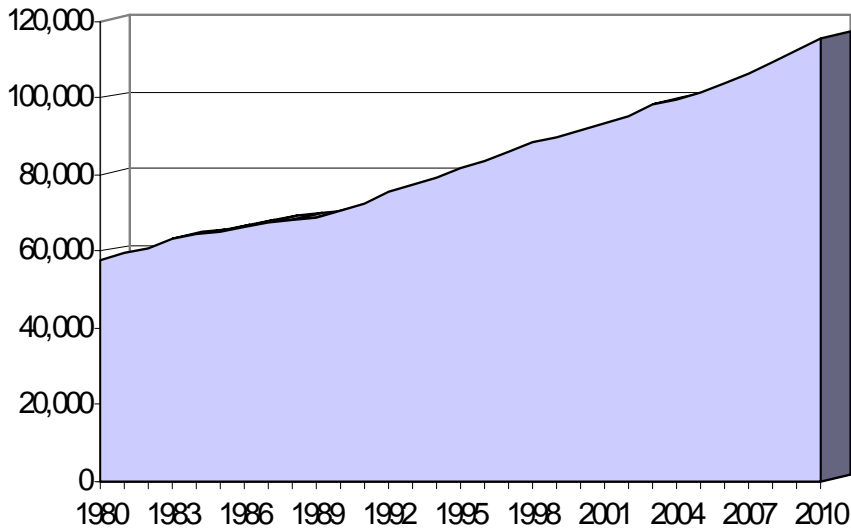
Gross taxable sales slipped over the last four years. The recession's effects were evident with this decline. Most sales occurs in the retail sales industry where the general merchandise stores dominated in total sales volume in 2003 with \$182 million.

The End

All the economic indicators for Cache County point toward an improving economy. In fact, the county was somewhat insulated from the recession's effects that hurt other counties, like Weber. The outlook is very positive for Cache County.

Population Profile

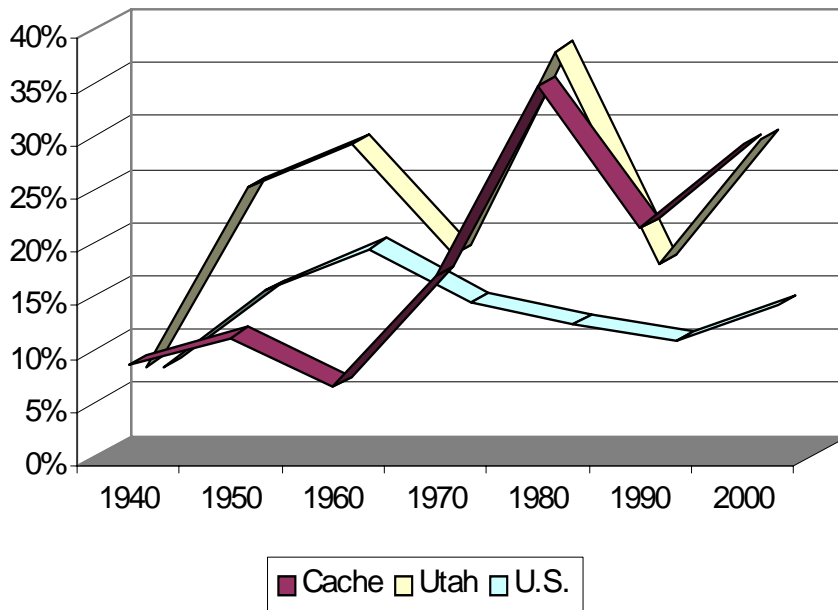
Cache Population



Steady growth throughout the 1990's added over 28,000 to the county's population through 2003.

Source: Utah Governor's Office of Planning and Budget.

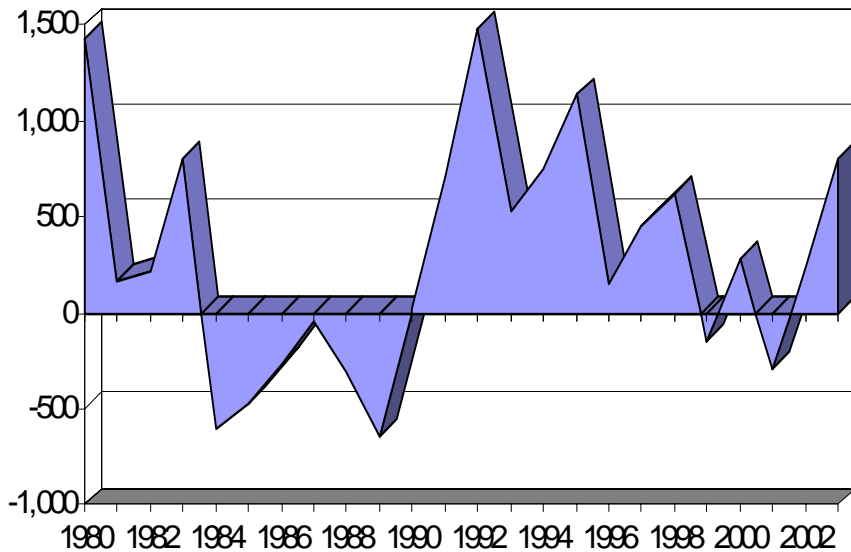
Population Change



Since 1970 the county has followed the state's growth pattern in population. Both Utah and Cache are growing at rates significantly higher than the nation.

Source: U.S. Census Bureau.

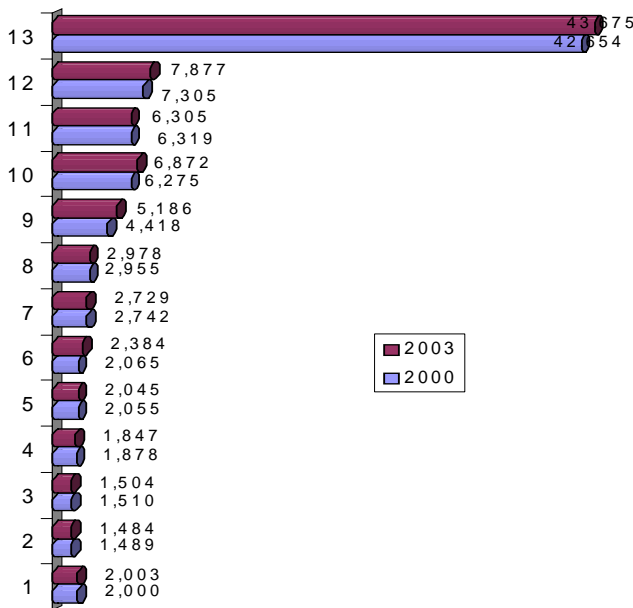
Cache Net-Migration



During the growth years, the county increased its population from both the natural increase in population and from persons moving in to take new jobs caused by economic growth.

Source: Utah Governor's Office of Planning and Budget.

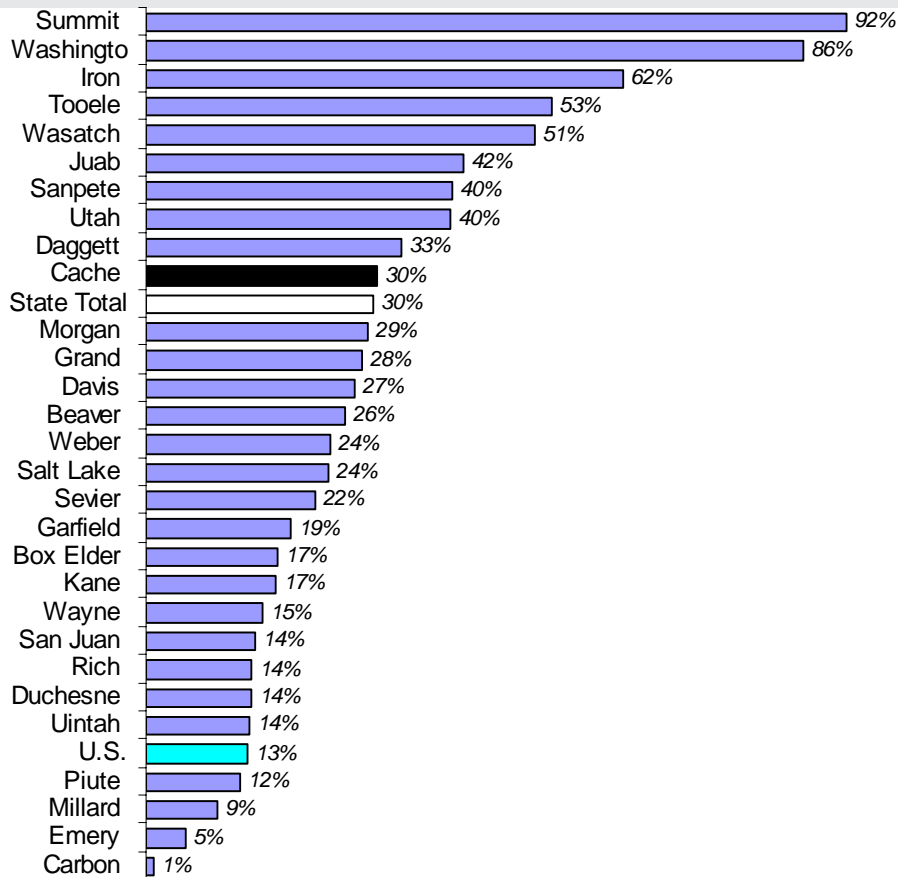
Cache Population by City



Logan City, by far, is the largest city in the county. Between 2000 and 2003, six of these cities actually lost population.

Source: 2000—U.S. Census Bureau; 2002 Estimates—Utah Governor's Office of Planning and Budget.

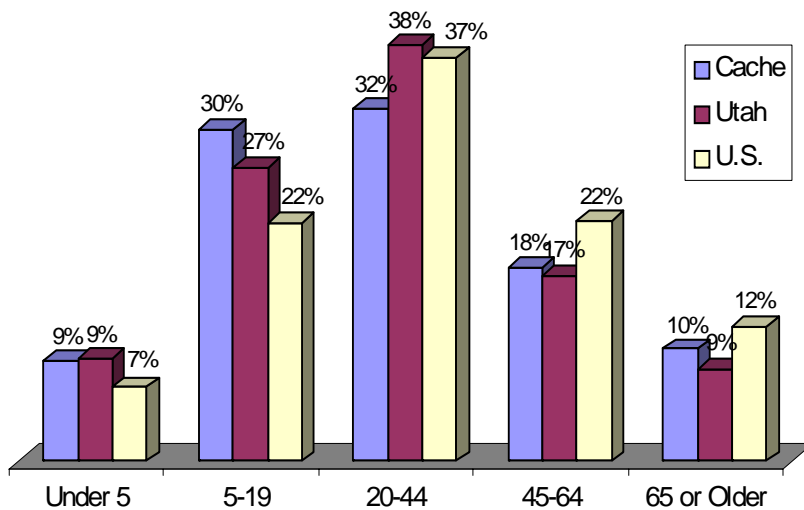
1990 to 2000 Population Growth by County



Cache ranked in the top ten fastest growing counties in the state increasing its population by 30 percent. The nation grew by only 13 percent over the ten year period.

Source: U.S. Census Bureau.

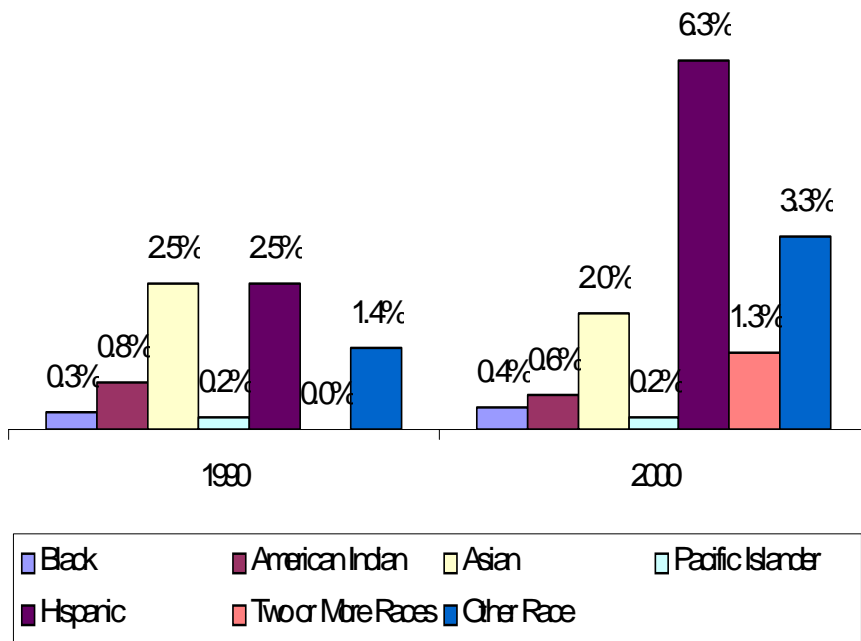
2000 Population Age Distribution



Cache County has more younger persons than the state or the nation, at least through age 19. After that the county trails both Utah state and the U.S. in the proportion of persons in the older age groups.

Source: U.S. Census Bureau.

Cache Race/Ethnic Distribution

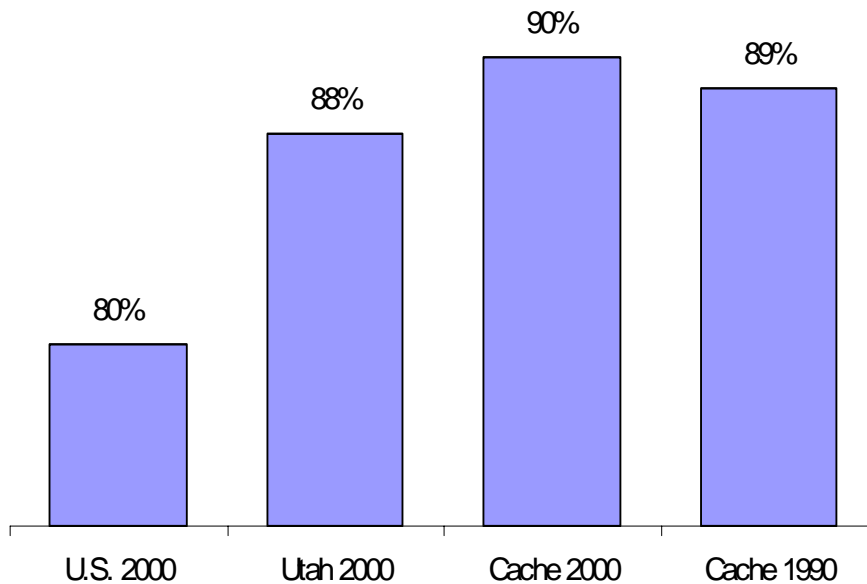


The proportion of Hispanics in Cache County has more than doubled since 1990. Most other groups have remained about the same in terms of their percent of the total population over the last ten years.

Source: U.S. Census Bureau.

NOTE: For Census 2000, the U.S. Census Bureau changed the way it collected race and ethnic information. Respondents were able to check as many racial groups as applied and also to indicate "other." As used by the Census Bureau, "Hispanic" or Latino is an ethnic designation rather than a racial category. This is a self-designated classification for people whose origins are from Spain, the Spanish-speaking countries of Central or South America, the Caribbean, or people identifying themselves as Spanish, Spanish-American, etc. That origin can be viewed as ancestry, nationality, or country of birth of the person or person's parents or ancestors prior to their arrival in the United States. Hispanics or Latinos can be of any racial background.

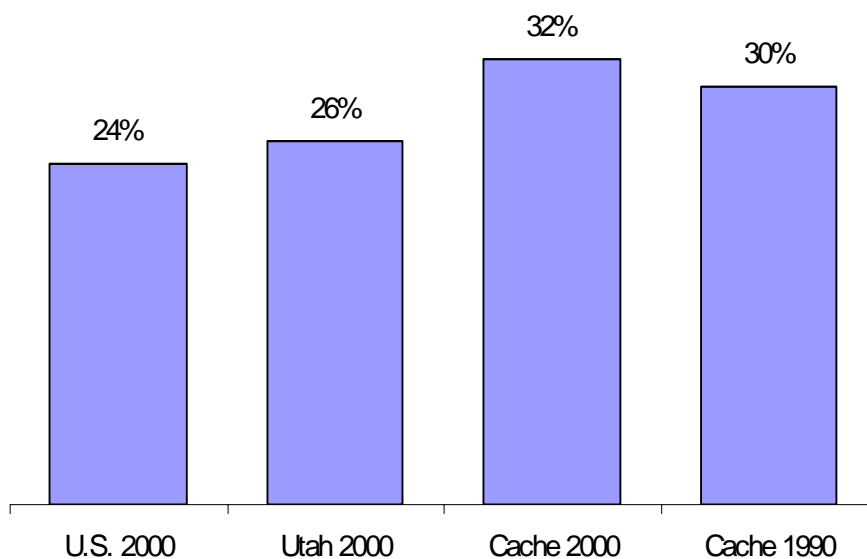
Adults With at Least a High School Diploma*



Cache County had a higher percentage of high school graduates than the state in both 1990 and in 2000, and a full 10 percent more of its residents had diplomas relative to the national average of 80 percent.

* Population 25 years and older.
Source: U.S. Census Bureau.

Adults With at Least a Bachelor's Degree*



Nearly one-third of persons 25 and older in Cache County had attained at least a Bachelor's Degree when only about a quarter of the population at the state and national level held degrees. One reason for the difference is the presence of Utah State University.

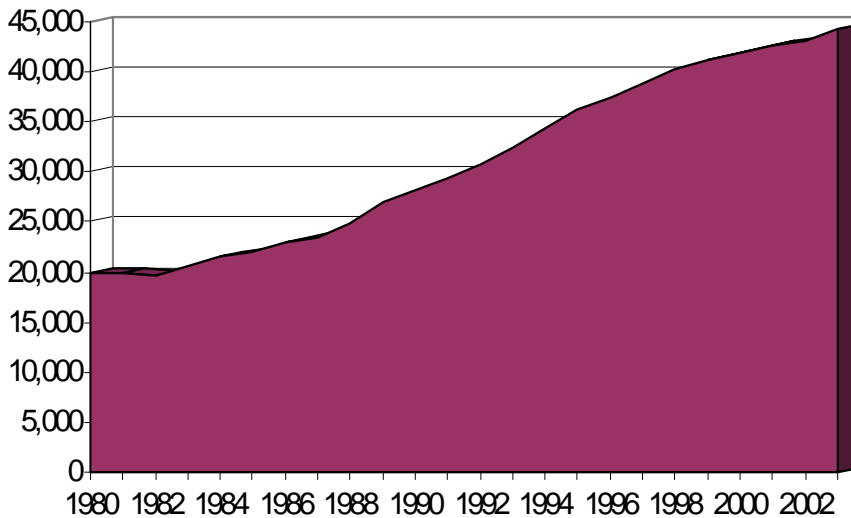
* Population 25 years and older.
Source: U.S. Census Bureau.

Employment



Profile

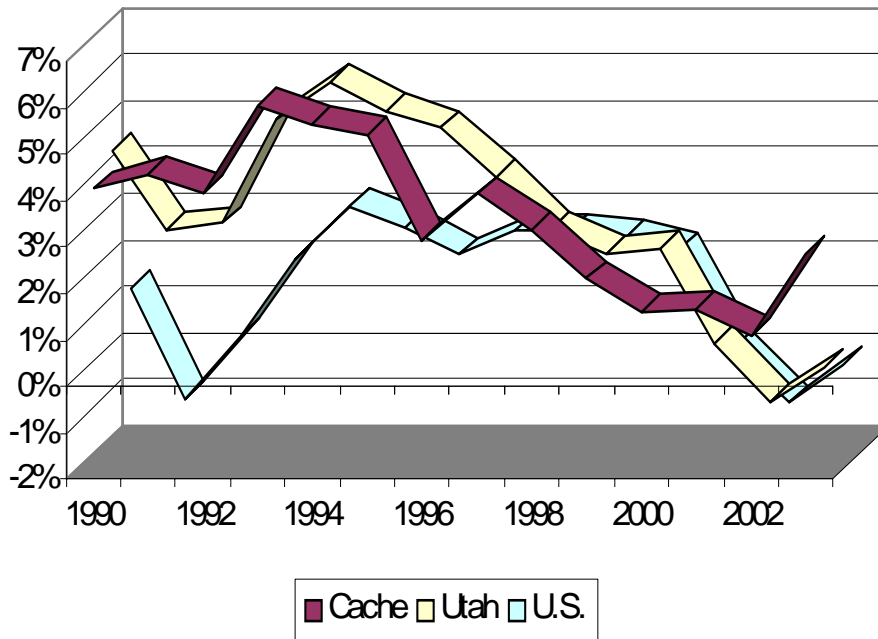
Cache Nonfarm Jobs



Even during the recession job growth continued. Since 1990 the creation of new jobs advanced at an average pace of 4.4 percent per year.

Source: Utah Department of Workforce Services.

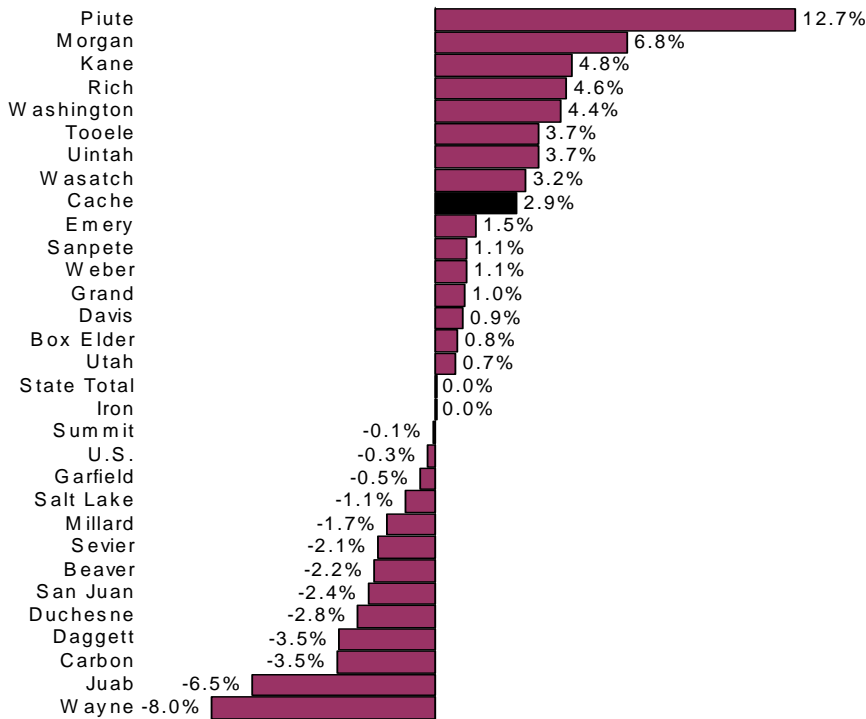
Annual Percent Change in Nonfarm Jobs



Cache County enjoyed positive employment growth even when the state and the nation shed jobs in 2002. All three levels - U.S., Utah, and Cache County - areas are finally seeing economic improvement.

Source: Utah Department of Workforce Services, U.S. Bureau of Labor Statistics.

Annual 2003 Change in Nonfarm Jobs

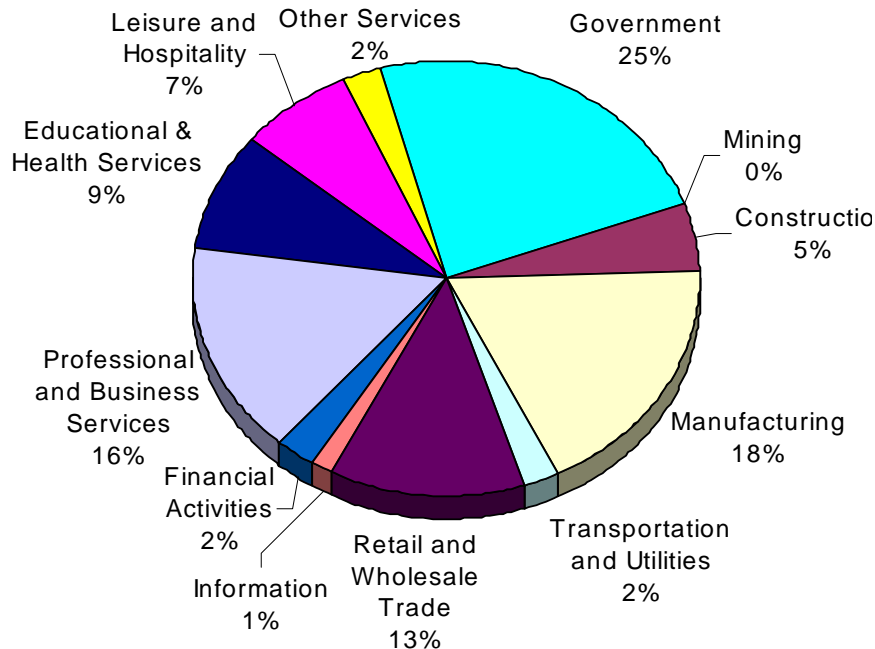


Cache County (in black) experienced a healthy 2.9 percent rate of job growth between 2002 and 2003.

Source: Utah Department of Workforce Services, U.S. Bureau of Labor Statistics

2003 Nonfarm Jobs Distribution by Industry

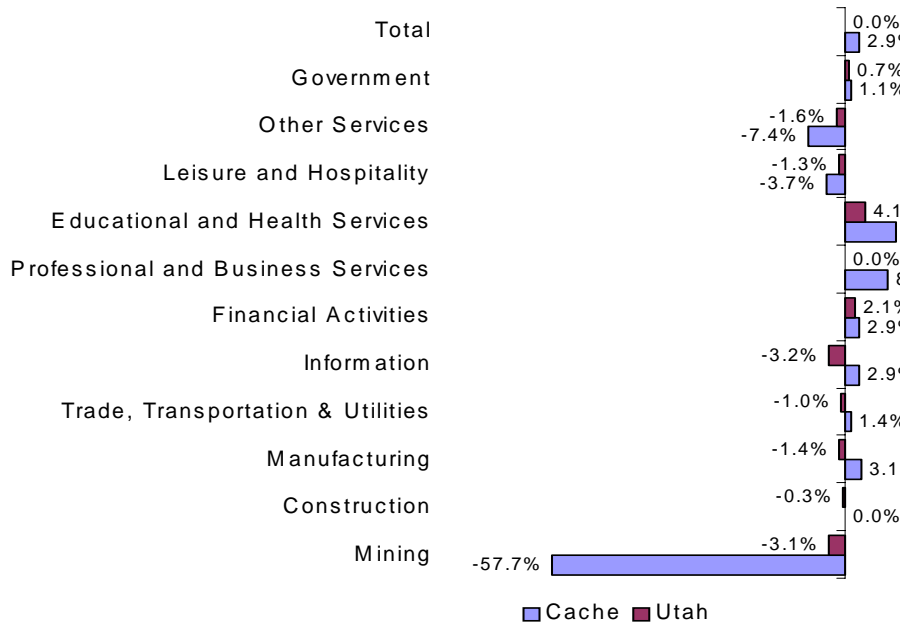
Cache County



Sixty percent of all jobs in the county are concentrated in manufacturing, government, and professional and business services.

Source: Utah Department of Workforce Services.

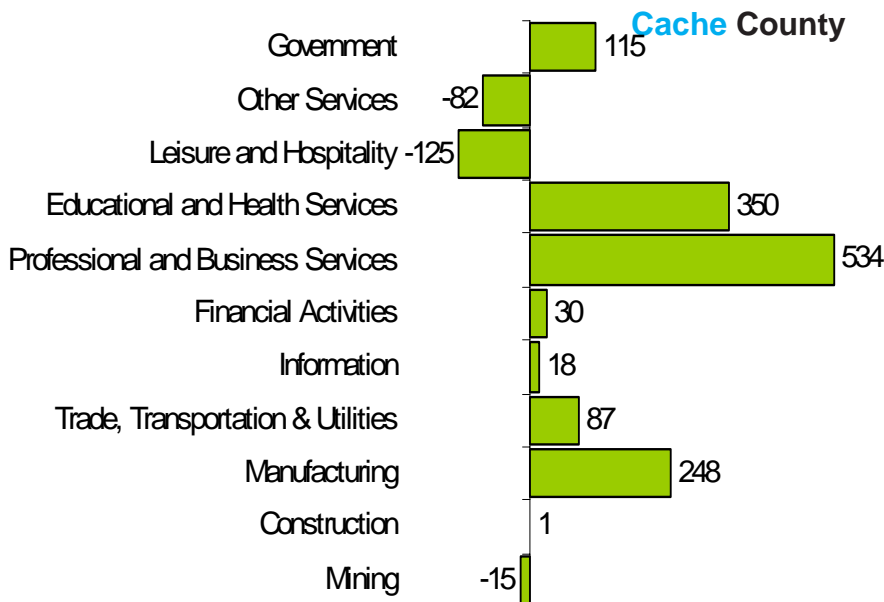
2003 Percent Change in Nonfarm Jobs by Industry



With a few exceptions, most industries gained jobs over the 2002 to 2003 period. Mining, with its loss of just a few jobs, make the chart appear as if there is a dramatic change.

Source: Utah Department of Workforce Services.

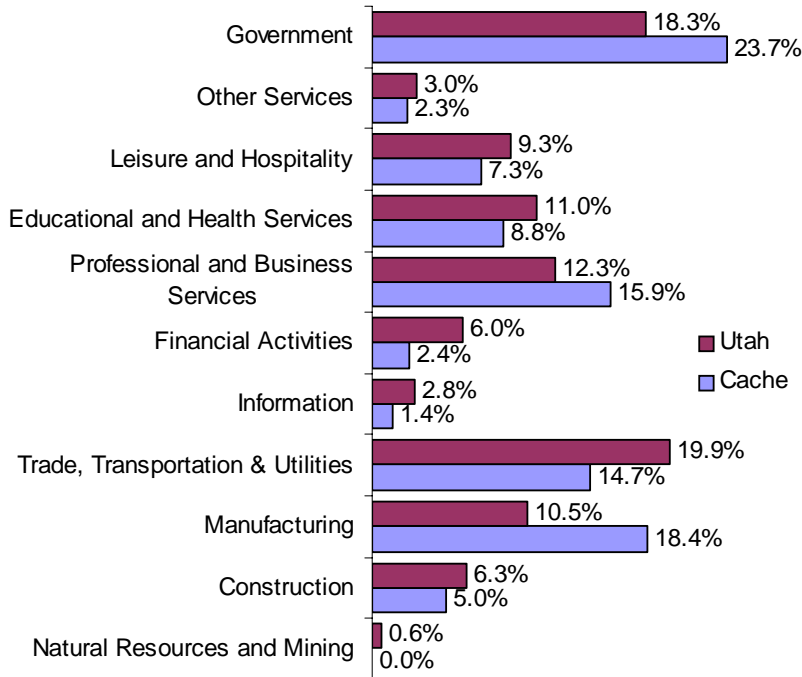
2003 Numeric Change in Nonfarm Jobs by Industry



In the annual comparison, only three industries actually lost jobs. These were more than offset by strong growth in other sectors.

Source: Utah Department of Workforce Services.

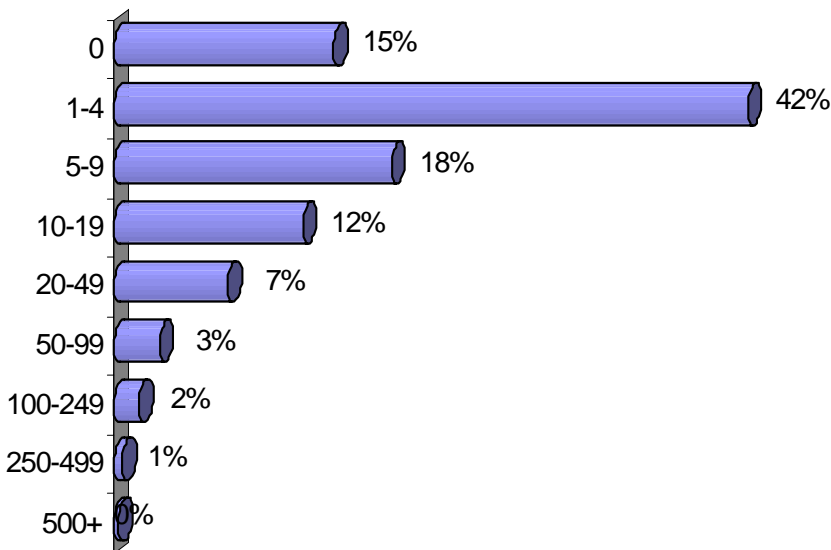
2003 Job Distribution by Industry



Cache County's industry mix is similar to the state in some, but very different in other industry sectors. One notable industry is manufacturing where the difference is wide, a spread between 11 and 18 percent.

Source: Utah Department of Workforce Services.

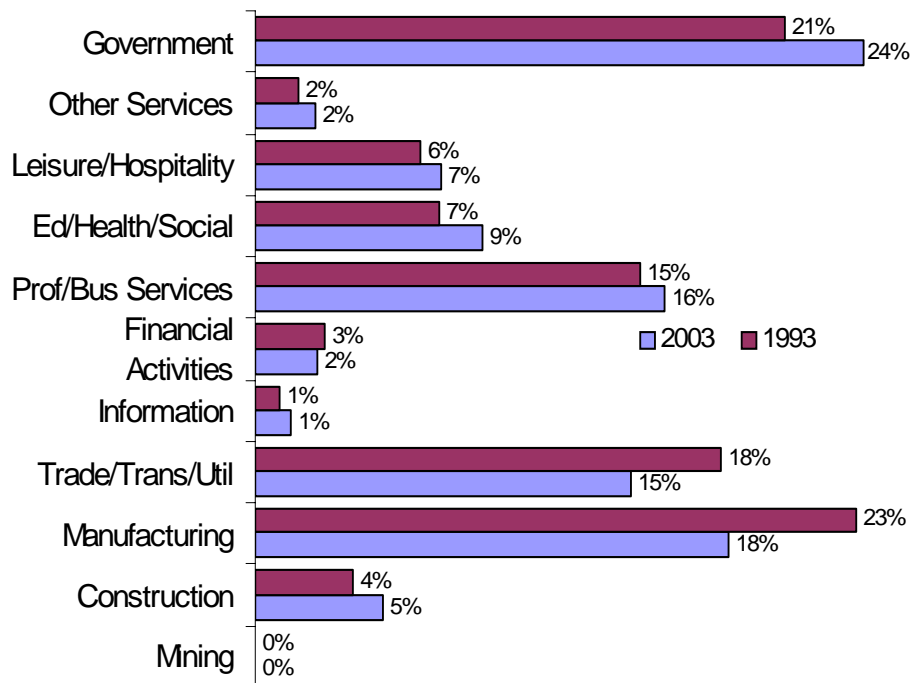
1st Qtr 2003 Cache County Firms by Size



Three-fourths of all firms in Cache County employ less than 10 workers.

Source: Utah Department of Workforce Services.

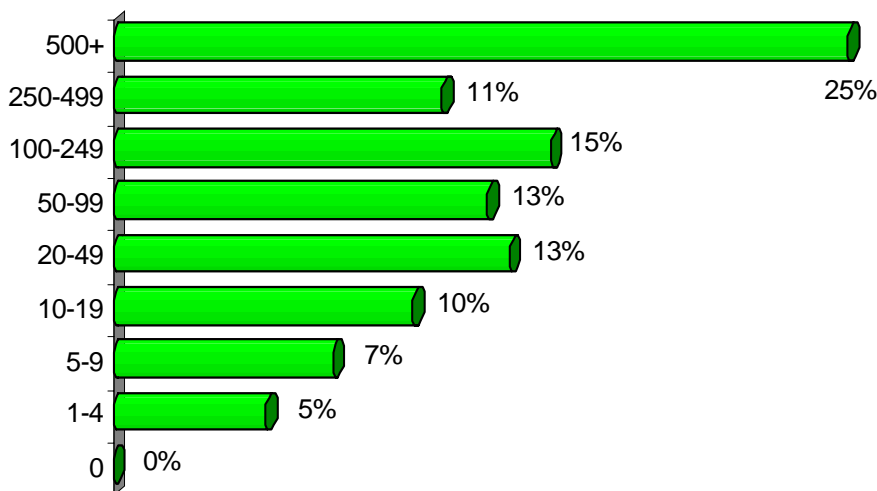
Cache County Industrial Job Distribution



Over the last decade the industry composition of the county has become more diversified.

Source: Utah Department of Workforce Services.

1st Qtr 2003 Cache County Employment by Firm Size

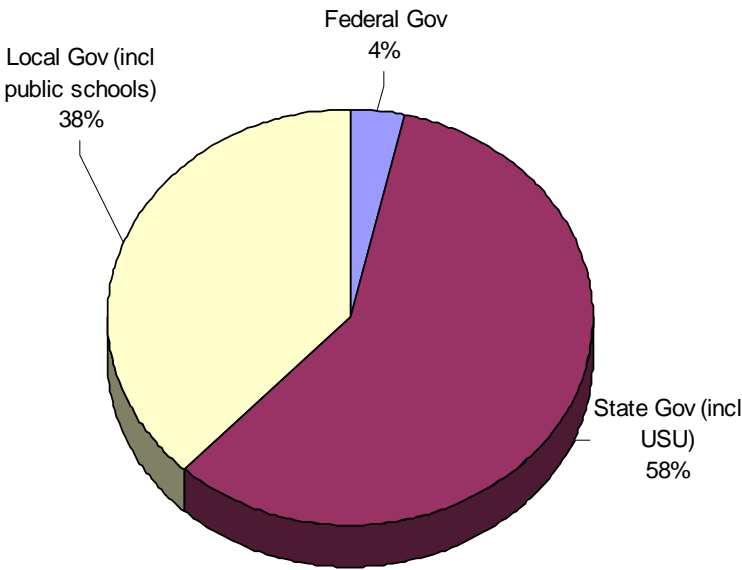


Clearly, one-fourth of all workers are on the payrolls of just a handful of firms. About 60 establishments in the county account for over half of all jobs.

Source: Utah Department of Workforce Services.

2003 Government Industry Employment

Cache County

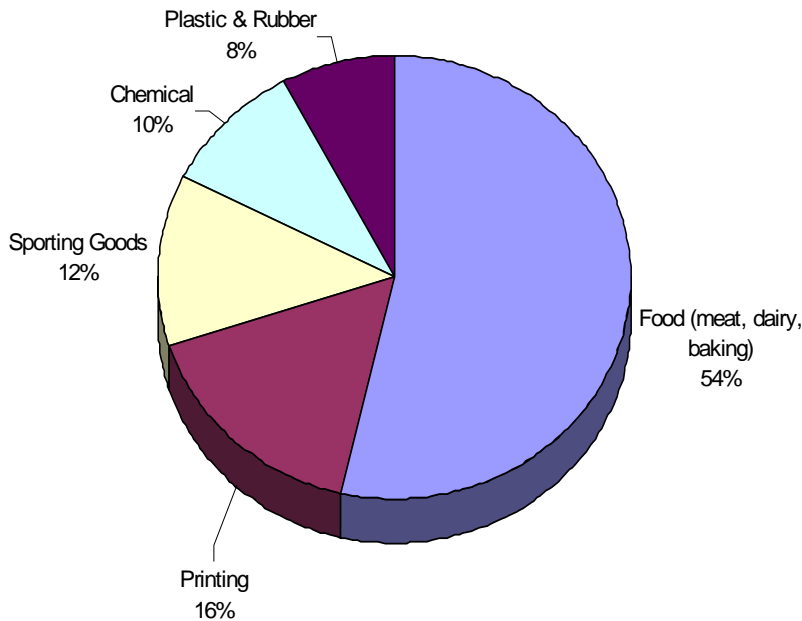


Most of the government employment in Cache County is in state government, namely Utah State University. The federal government has a small presence.

Source: Utah Department of Workforce Services.

2003 Manufacturing Industry Employment

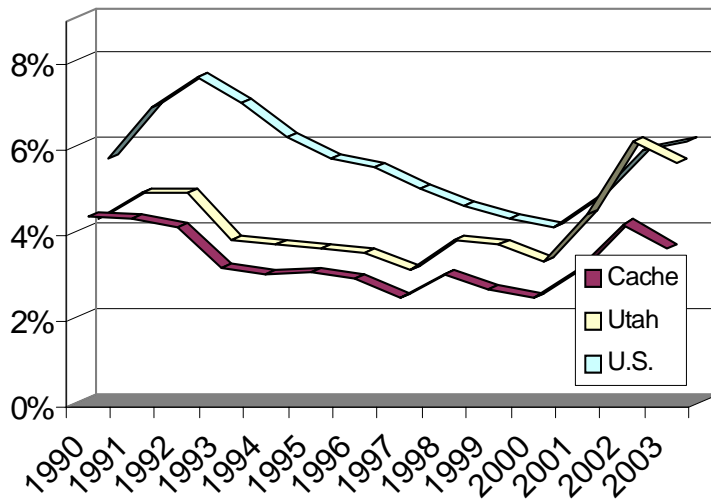
Cache County



An economic bulwark of jobs in the county is in the food processing manufacturing sector - including dairy and meat packing.

Source: Utah Department of Workforce Services.

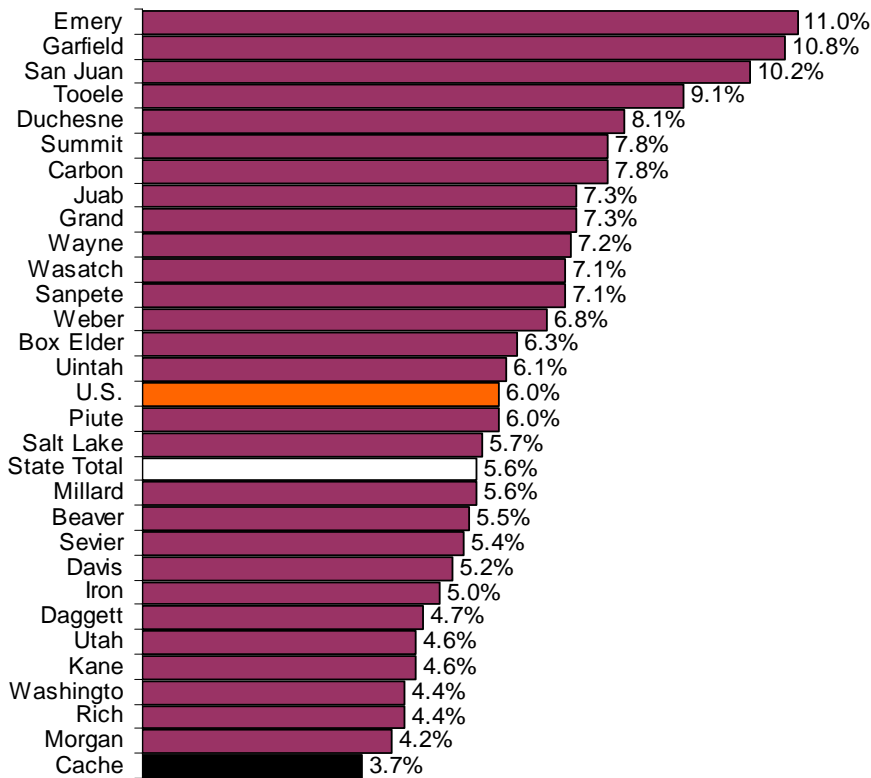
Annual Unemployment Rates



Unemployment rates have been consistently lower in Cache County when compared to the state or the nation.

Source: Utah Department of Workforce Services.

2003 Unemployment Rates by County



In 2003, Cache County had the honor of having the lowest unemployment rate of any county in the state with an annual rate of 3.7 percent.

Source: Utah Department of Workforce Services.

Largest Cache County Employers

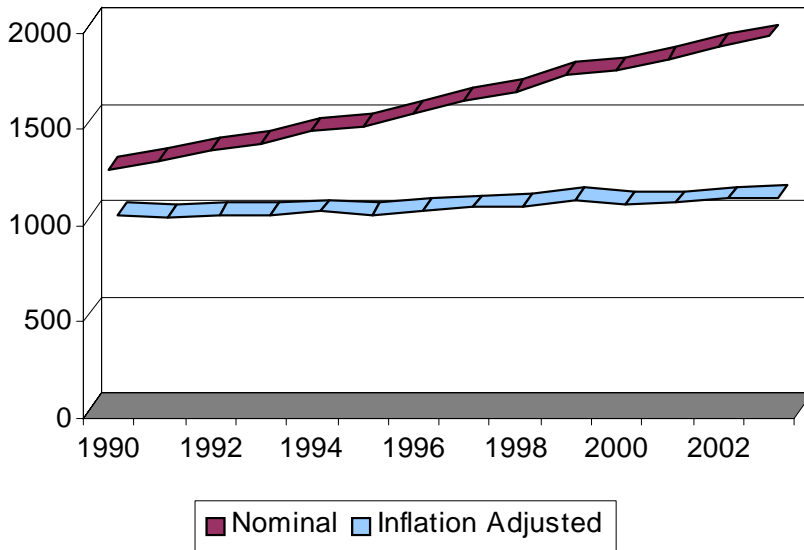
Company	Type of Industry
Utah State University	State University
Icon	Sports Equip. Manuf.
Cache County School District	Public Education
Convergys	Telemarketing Services
E A Miller	Meat Packing/Manuf.
Logan City	Local Government Public Adm
Logan City School District	Public Education
Logan Regional Hospital	Hospital
Schreiber Foods	Cheese Manuf.
Wal-Mart	Discount Department Store
Gossner Food Inc	Cheese Manuf.
Herff Jones Inc	Book Printing
Hyclone Laboratories Inc	Pharmaceutical Manuf.
Information Alliance Inc	Marketing Research
Moore Business Forms	Business Forms Manuf.
Pepperidge Farm Inc	Commercial Bakery
Presto Products Co	Plastics Film and Sheet Manuf
Smiths/Smiths Marketplace	Grocery Store
Space Dynamics Laboratory	Science Research
Sunshine Terrace Foundation Inc	Nursing Care Facility
Tyco Printed Circuit Group	Circuit Board Manuf.

Source: Utah Department of Workforce Services.

Wage and Income Profile



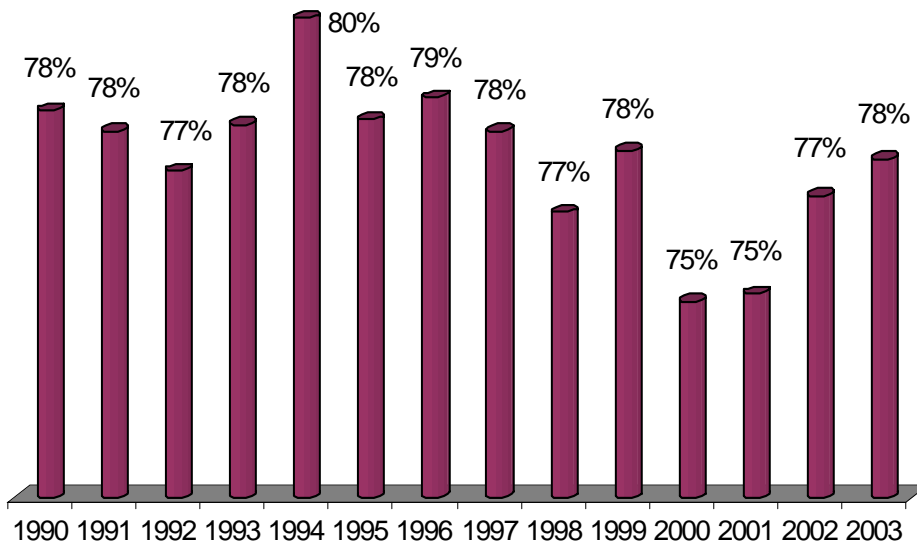
Cache County Average Monthly Wage



While nominal wages looked like they were growing strongly, real wages (after adjusting for inflation) only increased about 9 percent since 1990.

Note: Inflation adjusted wages reflect the rate of inflation as measured by the Consumer Price Index, 1982-84=100
 Source: Utah Department of Workforce Services.

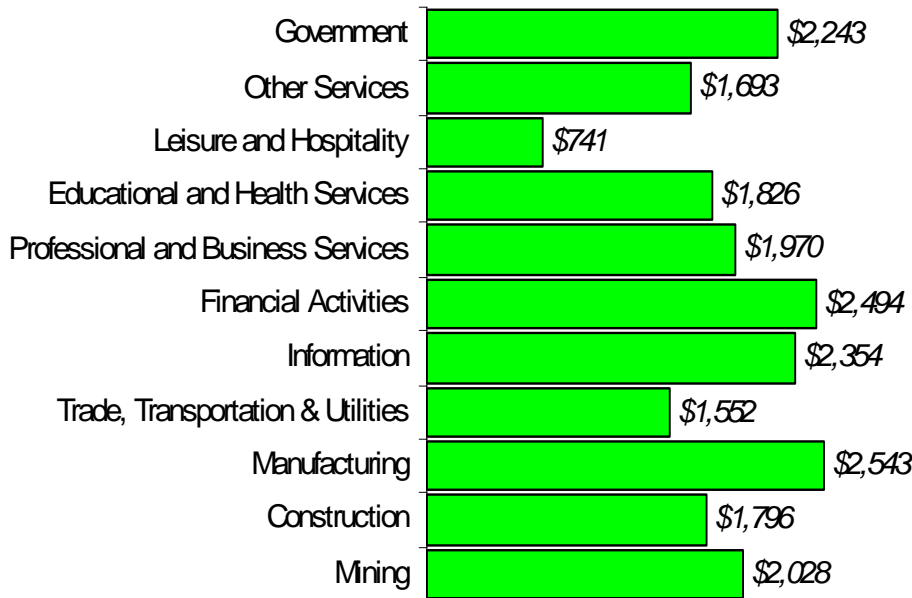
Cache County Average Monthly Wage As a Percent of State



Cache County average wages have consistently been about 20 to 25 percent below the state average.

Source: Utah Department of Workforce Services.

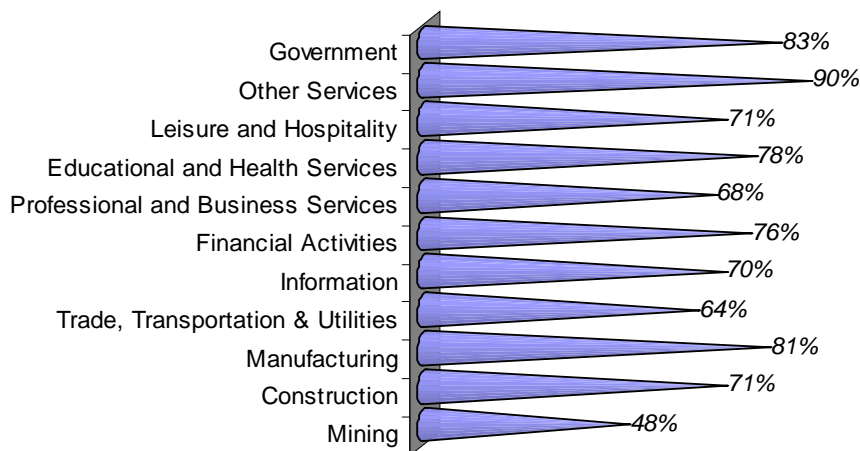
Cache County 2003 Average Monthly Wage by Industry



Manufacturing, information, financial activities, and government are the highest-paying industries in the county.

Source: Utah Department of Workforce Services.

Cache County 2003 Average Monthly Wage by Industry as a Percent of State

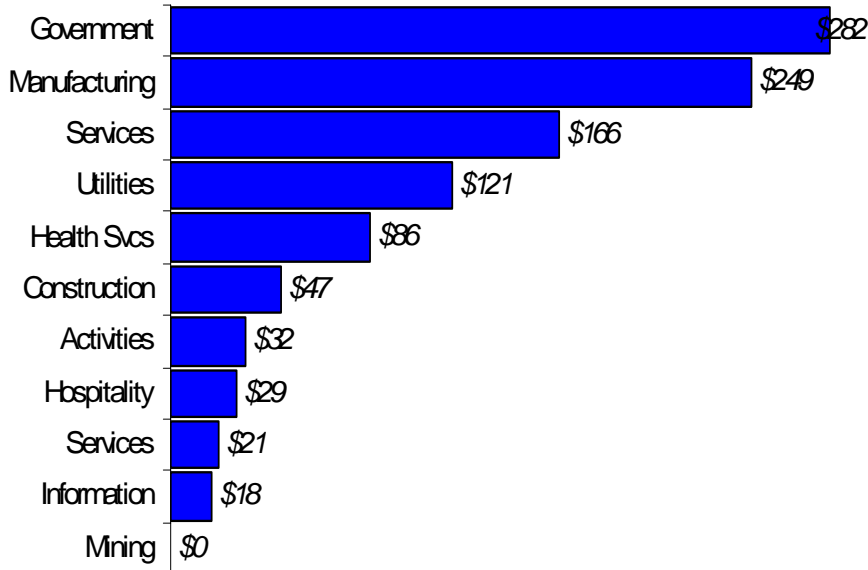


Wages in manufacturing, government and other services industry sectors were at least 80 percent of the state average for that particular industry in Cache County.

Source: Utah Department of Workforce Services.

Cache County 2003

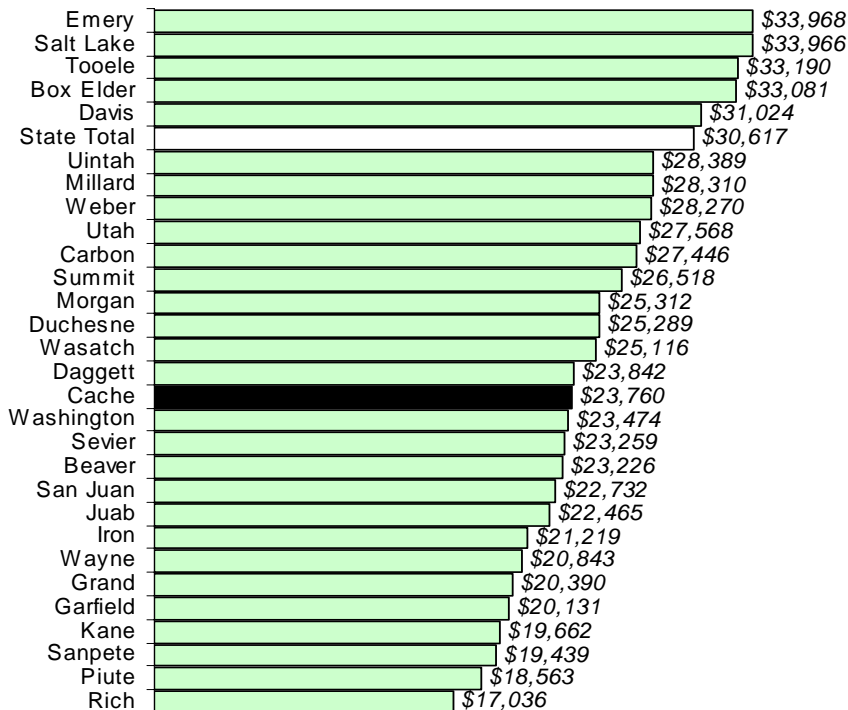
Total Wages by Industry (in millions of \$)



Government and manufacturing contribute half of all payroll in the county.

Source: Utah Department of Workforce Services.

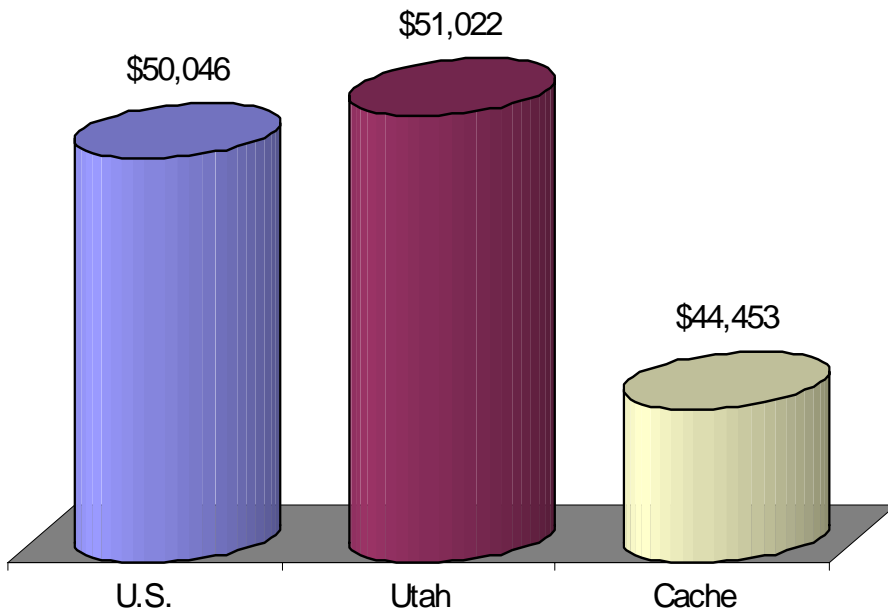
2003 Average Monthly Wage by County



Of the 29 counties, Cache ranks 16th in the average monthly wage.

Source: Utah Department of Workforce Services.

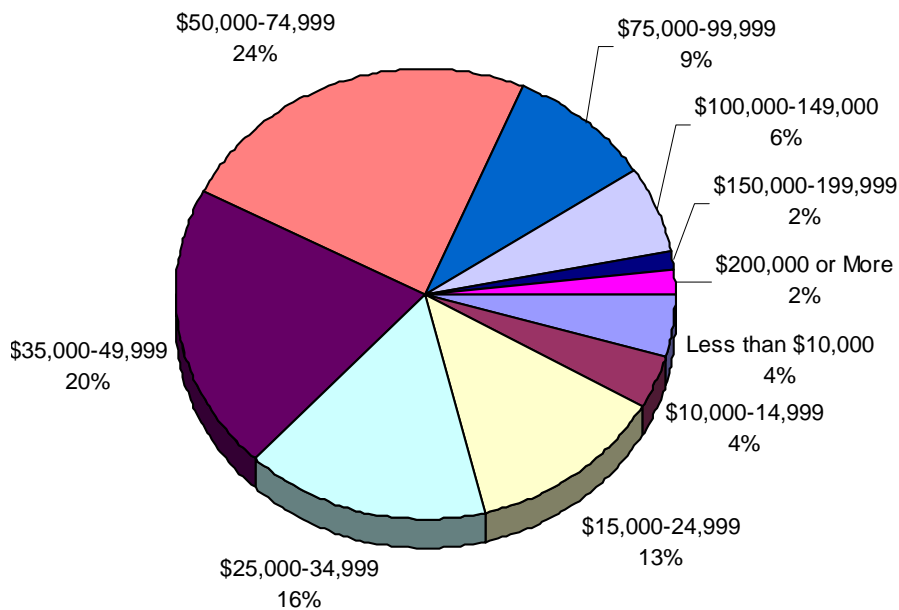
1999 Median Family Income



Medium family incomes in Cache County were about \$5,000 to \$6,000 below the state or the national average.

Source: U.S. Census Bureau.

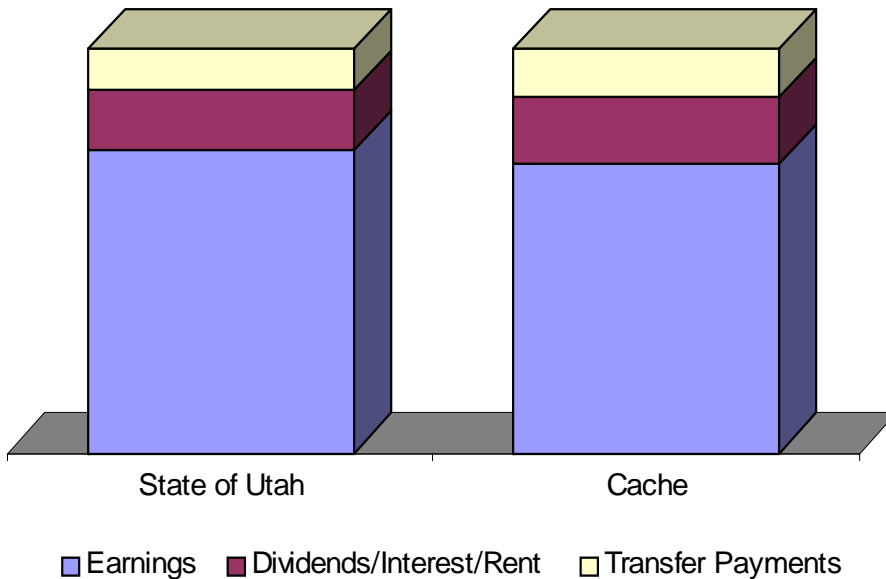
Cache County 1999 Family Income



Sixty percent of the families in Cache County had income of between \$25,000 and \$75,000.

Source: U.S. Census Bureau.

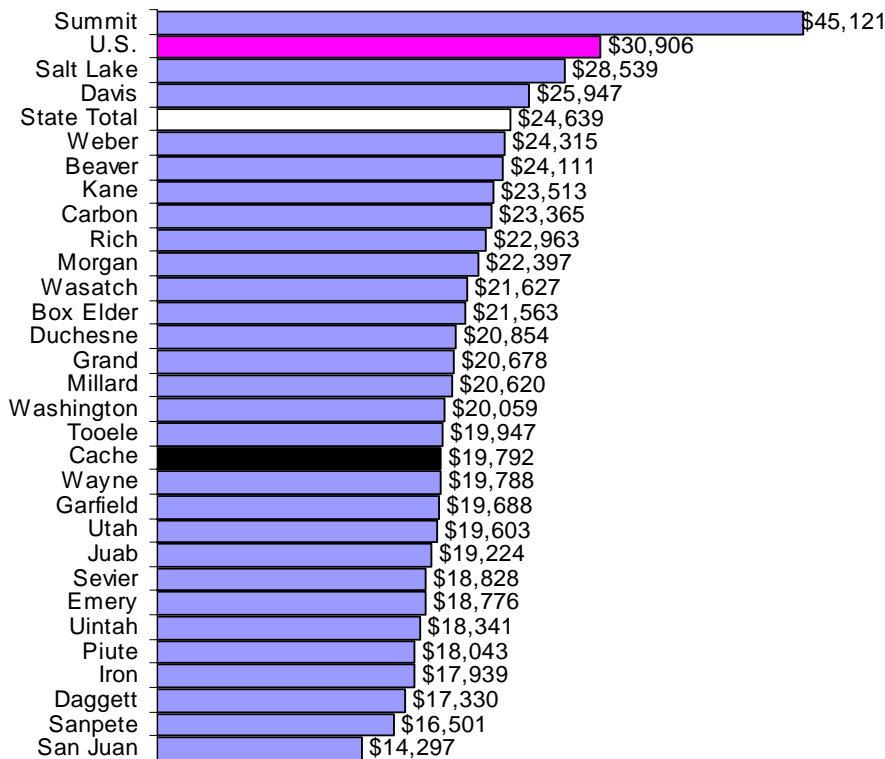
2002 Personal Income by Source



The composition of personal income was very similar between the county and the state.

Source: U.S. Bureau of Economic Analysis.

2002 Per Capita Personal Income by County



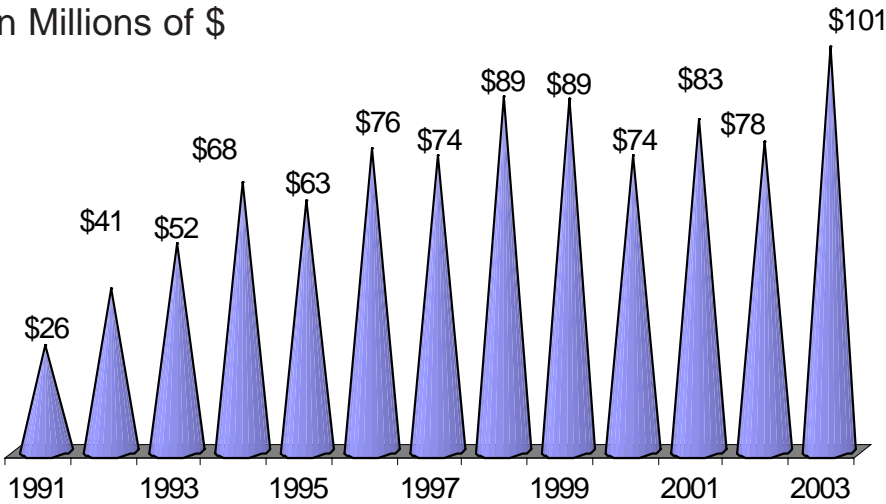
With per capita personal income of \$19,792 in 2002, Cache County was well below the state average of \$24,639. One important reason that Cache was below the state was the county's younger population.

Source: U.S. Bureau of Economic Analysis.

Other Economic Indicators

Cache County New Residential Building Permit Valuation

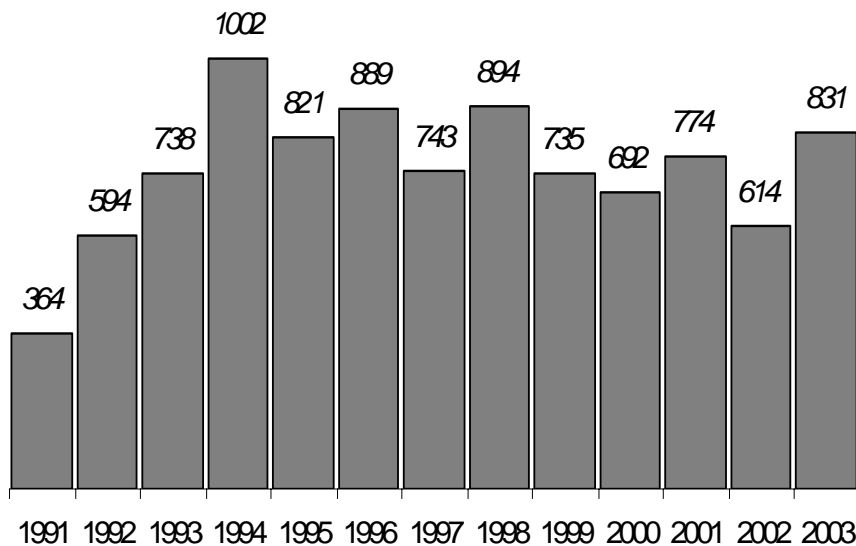
in Millions of \$



Residential activity was up between 2002 and 2003. It seems any effects of the recession on the market have passed.

Source: University of Utah, Bureau of Economic and Business Research.

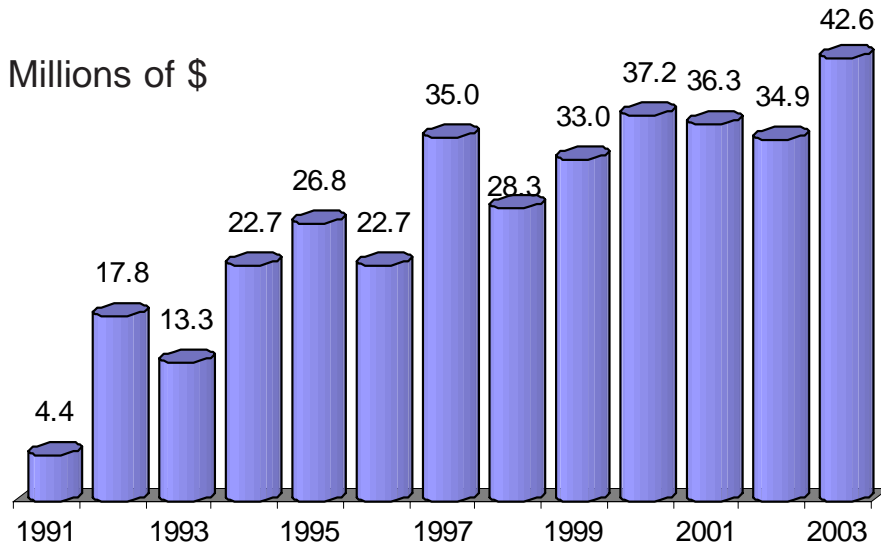
Cache County-Permitted New Dwelling Units



As with the valuation of new construction, the number of permits for dwelling units also increased significantly over the 2002 level.

Source: University of Utah, Bureau of Economic and Business Research.

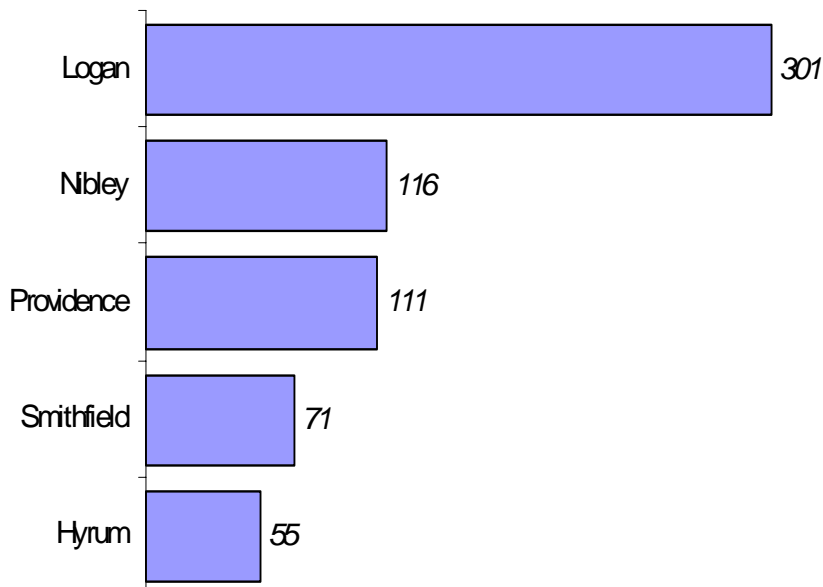
Cache County New Nonresidential Building Permit Valuation



Nonresidential construction (commercial and industrial) activity showed a healthy increase over the last year.

Source: University of Utah, Bureau of Economic and Business Research.

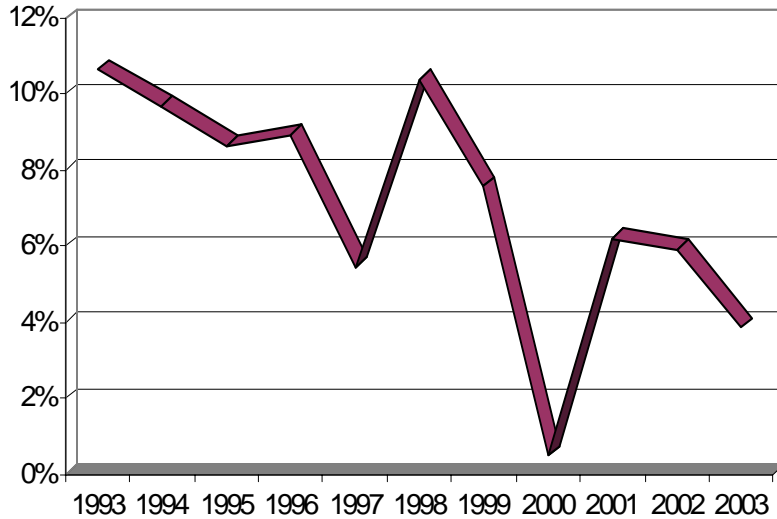
2003 Cache County-Permitted New Dwelling Units by Community



Logan continues to lead all communities in the county by the number of new dwelling units.

Source: University of Utah, Bureau of Economic and Business Research.

Percent Change in Cache County Gross Taxable Sales



The year-over percent change in sales has been getting smaller through 2000, but increased significantly since then, even through the recession.

Source: Utah State Tax Commission.

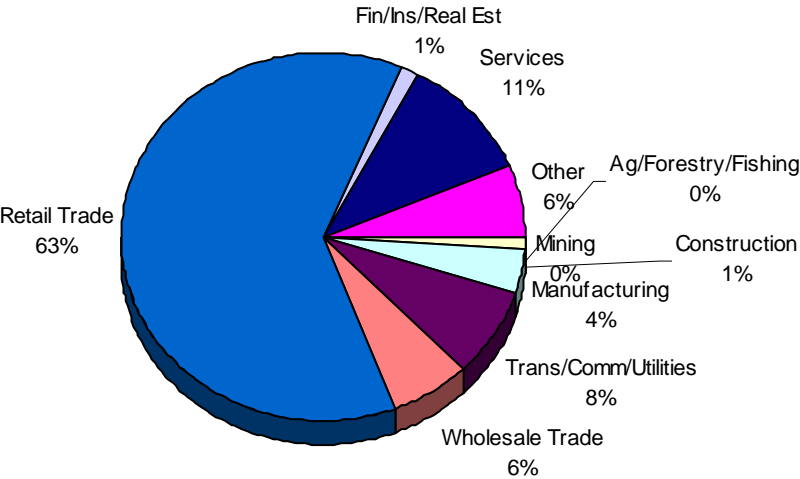
Cache County 2003 Gross Taxable Sales in Retail Trade Industry



The largest contributors to sales in retail trade was the general merchandise stores, food stores, and motor vehicle dealers.

Source: Utah State Tax Commission.

Cache County 2003 Gross Taxable Sales by Industry



The largest source of sales tax revenue is from the retail trade industry. Six of every ten dollars of sales originates from that sector.

Source: Utah State Tax Commission.

Data Profile



Note: The data tables in this section may be downloaded from our website in excel format at the following link:

<http://jobs.utah.gov/wi.genericlink>

State of Utah and Cache County Population 1900-2003

	Utah Population	Percent Change from Prior Year	Cache County Population	Percent Change from Prior Year
Population Counts from Decennial Census (April 1)				
1900	276,749		18,139	
1910	373,351	34.9%	23,062	27.1%
1920	449,396	20.4%	26,992	17.0%
1930	507,847	13.0%	27,424	1.6%
1940	550,310	8.4%	29,797	8.7%
1950	688,862	25.2%	33,536	12.5%
1960	890,627	29.3%	35,788	6.7%
1970	1,059,273	18.9%	42,331	18.3%
1980	1,461,037	37.9%	57,176	35.1%
1990	1,772,850	21.3%	70,183	22.7%
2000	2,233,169	26.0%	91,391	30.2%
InterCensal Population Estimates (July 1)				
1990	1,729,227	1.3%	70,560	
1991	1,780,870	3.0%	72,586	2.9%
1992	1,838,149	3.2%	75,441	3.9%
1993	1,889,393	2.8%	77,361	2.5%
1994	1,946,721	3.0%	79,530	2.8%
1995	1,995,228	2.5%	82,095	3.2%
1996	2,042,893	2.4%	83,834	2.1%
1997	2,099,409	2.8%	85,974	2.6%
1998	2,141,632	2.0%	88,326	2.7%
1999	2,193,014	2.4%	89,874	1.8%
2000	2,243,406	2.3%	91,897	2.3%
2001	2,278,712	1.6%	93,372	1.6%
2002	2,316,256	1.6%	95,460	2.2%
2003	2,385,358	3.0%	98,176	2.8%

Source: U.S. Census Bureau and Utah Population Estimates Committee.

Cache County Population by City 2000 - 2002

	2000	2001	2002	2000-2002	
				Percent	Numeric
Cache County	91,391	92,111	93,695	2.5%	2,304
Amalga	427	426	427	0.0%	0
Clarkston	688	686	685	-0.4%	-3
Cornish	259	259	259	0.0%	0
Hyde Park	2,955	2,916	2,938	-0.6%	-17
Hyrum	6,318	6,303	6,303	-0.2%	-15
Lewiston	1,877	1,860	1,862	-0.8%	-15
Logan	42,677	42,303	42,922	0.6%	245
Mendon	898	904	938	4.5%	40
Millville	1,507	1,502	1,501	-0.4%	-6
Newton	699	699	706	1.0%	7
Nibley	2,045	2,116	2,210	8.1%	165
North Logan	6,163	6,635	6,745	9.4%	582
Paradise	759	755	753	-0.8%	-6
Providence	4,377	4,523	4,845	10.7%	468
Richmond	2,051	2,045	2,043	-0.4%	-8
River Heights	1,496	1,490	1,490	-0.4%	-6
Smithfield	7,261	7,387	7,604	4.7%	343
Trenton	449	450	450	0.2%	1
Wellsville	2,737	2,726	2,724	-0.5%	-13
Balance of County	5,748	6,126	6,290	9.4%	542

Source: U.S. Census Bureau, July 1 estimates.

Cache County Population by City 1990 - 2000

	1990	2000	1990-2000	
			Percent	Numeric
Cache County	70,183	91,391	30.2%	21,208
Amalga	366	427	16.7%	61
Clarkston	645	688	6.7%	43
Cornish	205	259	26.3%	54
Hyde Park	2,190	2,955	34.9%	765
Hyrum	4,829	6,318	30.8%	1,489
Lewiston	1,532	1,877	22.5%	345
Logan	32,762	42,677	30.3%	9,915
Mendon	684	898	31.3%	214
Millville	1,202	1,507	25.4%	305
Newton	659	699	6.1%	40
Nibley	1,167	2,045	75.2%	878
North Logan	3,768	6,163	63.6%	2,395
Paradise	561	759	35.3%	198
Providence	3,344	4,377	30.9%	1,033
Richmond	1,955	2,051	4.9%	96
River Heights	1,274	1,496	17.4%	222
Smithfield	5,566	7,261	30.5%	1,695
Trenton	464	449	-3.2%	-15
Wellsville	2,206	2,737	24.1%	531
Balance of County	4,804	5,748	19.7%	944

Source: U.S. Census Bureau, April 1

Cache County 2000 Ethnic/Minority Population

	Total Population	Percent of Total
Total	91,391	100.0%
NonHispanic		
White	84,286	92.2%
Black	348	0.4%
American Indian	529	0.6%
Asian	1,814	2.0%
Hawaiian/Pacific Islander	181	0.2%
Other	3,026	3.3%
Two or more Races	1,207	1.3%
Hispanic	5,786	6.3%
Source: U.S. Census Bureau.		

Cache County Nonfarm Jobs by Industry 1980-2002

	Total	Mining	Construction	Manufacturing	Trade/Transportation/Utilities	Information	Financial Activities	Professional/Business Services	Education/Health/Social Services	Leisure/Hospitality Services	Other Services	Government	Average Annual Wage
1980	19,892	Industry-level Data Not Available											\$10,488
1981	19,818												\$11,556
1982	19,592												\$12,072
1983	20,572												\$12,648
1984	21,499												\$13,260
1985	22,069												\$13,560
1986	22,989												\$14,196
1987	23,573												\$14,700
1988	24,811												\$14,892
1989	27,028												\$14,976
1990	28,179												\$15,468
1991	29,466												\$16,020
1992	30,695												\$16,728
1993	32,543												\$17,100
1994	34,376												\$17,904
1995	36,234												\$18,180
1996	37,374												\$19,020
1997	38,918												\$19,800
1998	40,238												\$20,316
1999	41,171	23	2,290	8,386	6,231	575	1,025	5,671	2,989	2,975	909	10,036	\$21,372
2000	41,840	38	2,218	8,573	6,517	551	974	5,717	3,036	3,182	952	10,082	\$21,684
2001	42,537	43	2,217	8,317	6,481	592	1,006	6,400	3,178	3,112	963	10,228	\$22,344
2002	43,010	26	2,201	7,913	6,394	611	1,041	6,511	3,556	3,338	1,046	10,373	\$23,184
2003	44,236	11	2,202	8,161	6,481	629	1,071	7,045	3,906	3,213	1,029	10,488	\$23,184

Source: Utah Department of Workforce Services.

Cache County Employment by Size of Firm First Quarter 2003

Employment Range	Number of Establishments	Employment			Total Quarterly Wages	Average Monthly Wage
		January	February	March		
Total	2,647	43,712	43,665	43,633	\$246,382,447	\$1,881
0	384	164	51	0	328,053	1,526
1-4	1,109	2,267	2,248	2,271	11,200,886	1,651
5-9	485	3,161	3,211	3,259	15,691,913	1,629
10-19	329	4,374	4,374	4,440	20,480,149	1,553
20-49	198	5,815	5,814	5,872	29,721,424	1,698
50-99	78	5,436	5,491	5,539	32,413,942	1,969
100-249	43	6,805	6,607	6,487	33,857,486	1,701
250-499	14	4,863	4,898	4,869	35,145,153	2,402
500 & Over	7	10,827	10,971	10,896	67,543,441	4,418

Source: Utah Department of Workforce Services.

Cache County Selected Data from the Agricultural Census 1987, 1992, 1997, 2002

	1987	1992	1997	2002
Farms (Number)	1,223	1,189	1,363	1,194
Land in Farms (Acres)	324,105	267,924	271,632	246,586
Average Size of Farm	265	225	199	207
Farms by Size	1,223	1,189	1,345	1,194
1 to 9 Acres	168	159	239	231
10 to 49 Acres	331	342	377	379
50 to 179 Acres	371	332	379	299
180 to 499 Acres	256	239	232	173
500 to 999 Acres	62	75	71	66
1,000 Acres or More	35	42	47	46
Market Value of Ag Products Sold (in thousands)	66,629	87,898	165	2,938
Operators by Principal Occupation—Farming	574	585	551	543
Operators by Principal Occupation—Other	649	604	812	651

Source: U.S. Department of Agriculture.

Cache County Civilian Labor Force and Unemployment Rates 1980-2002

	Civilian Labor Force	Employment	Unemployment	
			Number	Rate
1980	24,839	23,724	1,115	4.5%
1981	17,460	16,596	864	4.9%
1982	25,069	23,424	1,645	6.6%
1983	19,228	18,366	862	4.5%
1984	28,657	26,996	1,661	5.8%
1985	26,966	25,601	1,365	5.1%
1986	28,340	27,094	1,246	4.4%
1987	28,891	27,577	1,314	4.5%
1988	29,861	28,726	1,135	3.8%
1989	32,053	30,821	1,232	3.8%
1990	33,020	31,727	1,293	3.9%
1991	34,117	32,882	1,235	3.6%
1992	35,328	33,997	1,331	3.8%
1993	37,723	36,589	1,134	3.0%
1994	39,682	38,506	1,176	2.9%
1995	39,826	38,581	1,245	3.1%
1996	40,879	39,650	1,229	3.0%
1997	41,926	40,867	1,059	2.5%
1998	43,136	41,790	1,346	3.1%
1999	43,732	42,530	1,202	2.7%
2000	45,667	44,515	1,152	2.5%
2001	46,601	45,110	1,491	3.2%
2002	47,259	45,237	2,022	4.3%
2003	49,049	47,241	1,809	3.7%

p = preliminary

Source: Utah Department of Workforce Services, unpublished data.

2000 Census Profile

	Cache County		Utah		United States	
	Number	Percent	Number	Percent	Number	Percent
Total Population	91,391	100.0%	2,233,169	100.0%	281,421,906	100.0%
Sex and Age						
Male	45,009	49.2%	1,119,031	50.1%	138,053,563	49.1%
Female	46,382	50.8%	1,114,138	49.9%	143,368,343	50.9%
Under 5	9,046	9.9%	209,378	9.4%	19,175,798	6.8%
5 to 9 years	7,371	8.1%	193,033	8.6%	20,549,505	7.3%
10 to 14 years	7,346	8.0%	192,288	8.6%	20,528,072	7.3%
15 to 19 years	10,157	11.1%	216,278	9.7%	20,219,890	7.2%
20 to 24 years	14,933	16.3%	225,152	10.1%	18,964,001	6.7%
25 to 34 years	13,492	14.8%	327,064	14.6%	39,891,724	14.2%
35 to 44 years	10,032	11.0%	299,536	13.4%	45,148,527	16.0%
45 to 54 years	7,829	8.6%	237,710	10.6%	37,677,952	13.4%
55 to 59 years	2,555	2.8%	80,053	3.6%	13,469,237	4.8%
50 to 64 years	2,091	2.3%	62,455	2.8%	10,805,447	3.8%
65 to 74 years	397	0.4%	101,548	4.5%	18,390,986	6.5%
75 to 84 years	2,311	2.5%	66,923	3.0%	12,361,180	4.4%
85 years and older	1,031	1.1%	21,751	1.0%	4,239,587	1.5%
Median age (years)	23.9		27.1		35.3	
18 years and over	62,798	68.7%	718,698	32.2%	72,293,812	25.7%
65 years and over	6,539	7.2%	190,222	8.5%	34,991,753	12.4%
Relationship						
In households	89,202	97.6%	2,192,689	98.2%	273,643,273	97.2%
In group quarters	2,189	2.4%	40,480	1.8%	7,778,633	2.8%
Institutionalized	423	0.5%	19,467	0.9%	4,059,039	1.4%
Household by Type						
Total Households	27,543	100.0%	701,281	100.0%	105,480,101	100.0%
Families	21,018	76.3%	535,294	76.3%	71,787,347	68.1%
Married couple families	18,294	66.4%	442,931	63.2%	54,493,232	51.7%
With own children under 18	10,420	37.8%	245,743	35.0%	24,835,505	23.5%
Female householder, no husband	1,973	7.2%	65,941	9.4%	12,900,103	12.2%
With own children under 18	1,222	4.4%	40,329	5.8%	7,561,874	7.2%
Nonfamily households	6,525	23.7%	165,987	23.7%	33,692,754	31.9%
Average Household Size	3.24		3.13		2.59	
Average Family Size	3.59		3.57		3.14	
Housing Occupancy						
Total housing units	29,035	100.0%	768,594	100.0%	115,904,641	100.0%
Occupied housing units	27,543	94.9%	701,281	91.2%	105,480,101	91.0%
Vacant housing units	1,492	5.1%	67,313	8.8%	10,424,540	9.0%
For seasonal, recreation or occasional use	312	1.1%	29,685	3.9%	3,578,718	3.1%
Rental Vacancy Rate	4.4%		6.5%		6.8%	
School Enrollment						
Population 3 years and over enrolled in school	37,654	100.0%	741,524	100.0%	76,632,927	100.0%
Nursery school, preschool	1,654	4.4%	46,057	6.2%	4,957,582	6.5%
Kindergarten	1,476	3.9%	38,261	5.2%	4,157,491	5.4%
Elementary (grades 1-8)	11,662	31.0%	305,486	41.2%	33,653,641	43.9%
High School (grades 9-12)	6,525	17.3%	164,977	22.2%	16,380,951	21.4%
College or graduate school	16,337	43.4%	186,743	25.2%	17,483,262	22.8%

Source: U.S. Census Bureau.

2000 Census Profile

	Cache County		Utah		United States	
	Number	Percent	Number	Percent	Number	Percent
Educational Attainment						
Population 25 years and over	42,544	100.0%	1,197,892	100.0%	182,211,639	100.0%
Less than 9th grade	1,328	3.1%	38,426	3.2%	13,755,477	7.5%
9th to 12th grade	2,753	6.5%	108,585	9.1%	21,960,148	12.1%
High school graduate (includes equivalency)	9,639	22.7%	294,426	24.6%	52,168,981	28.6%
Some college, no degree	12,288	28.9%	348,680	29.1%	38,351,595	21.0%
Associate degree	2,974	7.0%	94,812	7.9%	11,512,833	6.3%
Bachelor's degree	8,904	20.9%	213,959	17.9%	28,317,792	15.5%
Graduate or professional degree	4,658	10.9%	99,004	8.3%	16,144,813	8.9%
Percent high school graduate or higher	90.4%		87.7%		80.4%	
Percent bachelor's degree or higher	31.9%		26.1%		24.4%	
Marital Status						
Population 15 years and over	67,729	100.0%	1,639,688	100.0%	221,148,671	100.0%
Never married	22,620	33.4%	457,015	27.9%	59,913,370	27.1%
Now married, except separated	38,795	57.3%	963,341	58.8%	120,231,273	54.4%
Separated	477	0.7%	20,027	1.2%	4,769,220	2.2%
Widowed	2,491	3.7%	67,035	4.1%	14,674,500	6.6%
Divorced	3,346	4.9%	132,270	8.1%	21,560,308	9.7%
Employment Status						
Population 16 years and over	66,216	100.0%	1,600,279	100.0%	217,168,077	100.0%
In civilian labor force	46,854	70.8%	1,098,923	68.7%	137,668,798	63.4%
Employed	44,481	67.2%	1,044,362	65.3%	129,721,512	59.7%
Unemployed	2,373	3.6%	54,561	3.4%	7,947,286	3.7%
Unemployment rate	3.6%	0.0%			5.8%	
Armed Forces	47	0.1%	5,508	0.3%	1,152,137	0.5%
Not in labor force	19,315	29.2%	495,848	31.0%	78,347,142	36.1%
Females 16 years and over	34,003		807,196		112,185,795	
In civilian labor force	21,328	62.7%	491,327	60.9%	64,383,493	57.4%
Commuting to Work						
Mean travel time to work (minutes)	16.8		21.3		25.5	
Occupation						
Employed civilian population 16 years and over	44,481	100.0%	1,044,362	100.0%	129,721,512	100.0%
Management/professional/related	14,527	32.7%	339,310	32.5%	43,646,731	33.6%
Service	6,491	14.6%	145,862	14.0%	19,276,947	14.9%
Sales and Office	10,765	24.2%	301,566	28.9%	34,621,390	26.7%
Farming/fishing/forestry	714	1.6%	5,417	0.5%	951,810	0.7%
Construction/extraction/maintenance	3,591	8.1%	110,873	10.6%	12,256,138	9.4%
Production/transportation/material moving	8,393	18.9%	141,334	13.5%	18,968,496	14.6%
Class of Worker						
Private wage and salary workers	32,806	73.8%	816,475	78.2%	101,794,361	78.5%
Government workers	9,029	20.3%	163,996	15.7%	18,923,353	14.6%
Self-employed, not in incorporated business	2,473	5.6%	60,621	5.8%	8,603,761	6.6%
Unpaid family workers	173	0.4%	3,270	0.3%	400,037	0.3%

Source: U.S. Census Bureau.

2000 Census Profile

	Cache County		Utah		United States	
	Number	Percent	Number	Percent	Number	Percent
Income						
Median household income	\$39,730		\$45,726		\$41,994	
Median family income	\$44,453		\$51,022		\$50,046	
Per capita income	\$15,094		\$18,185		\$21,587	
Total Households	27,597	100.0%	701,933	100.0%	105,539,122	100.0%
With earnings	24,327	88.2%	604,567	86.1%	84,962,743	80.5%
With Social Security income	4,754	17.2%	144,815	20.6%	27,084,417	25.7%
With Supplemental Security Income	625	2.3%	19,890	2.8%	4,615,885	4.4%
With public assistance income	680	2.5%	21,896	3.1%	3,629,732	3.4%
With retirement income	3,332	12.1%	110,476	15.7%	17,659,058	16.7%
Median Earnings						
Male, full-time, year-round workers	\$32,397		\$36,935		\$37,057	
Female, full-time, year-round workers	\$21,079		\$24,872		\$27,194	
Poverty Status						
Families	1,689	8.0%	34,969	6.5%	6,620,945	9.2%
With children under 18 years	1,174	9.4%	28,038	8.7%	5,155,866	13.6%
With children under 5 years	714	11.3%	16,535	10.9%	2,562,263	17.0%
Families with female householder, no husband present	463	23.9%	13,849	22.1%	3,315,916	26.5%
With children under 18 years	420	32.7%	12,557	29.0%	2,940,459	34.3%
With children under 5 years	180	45.6%	6,429	41.9%	1,401,493	46.4%
Individuals	12,017	13.5%	206,328	9.4%	33,899,312	12.4%
65 years and over	380	6.2%	10,695	5.8%	3,287,774	9.9%

Source: U.S. Census Bureau.

Cache County Permit-Authorized Construction 1999-2003

	1999	2000	2001	2002	2003	% Change 2002-2003
Cache County						
New Dwelling Units	735	692	774	614	831	35.3%
New Residential (\$000)	88,461.0	74,018.6	83,206.5	77,516.5	101,315.3	30.7%
New Nonresidential(\$000)	32,963.3	37,245.2	36,283.4	34,921.1	42,581.2	21.9%
Additions/Alterations/Repairs						
Residential (\$000)	3,751.4	3,435.5	3,413.7	3,800.5	4,593.9	20.9%
Nonresidential (\$000)	21,887.8	10,972.7	8,024.6	10,665.9	18,195.2	70.6%
Total (\$000)	147,063.5	125,672.0	130,928.2	126,904.0	166,685.6	31.3%
Amalga						
New Dwelling Units	2	5	4	1	3	200.0%
New Residential (\$000)	268.8	457.6	397.4	92.5	428.1	362.8%
New Nonresidential(\$000)	20.0	70.6	126.6	18.0	90.0	400.0%
Additions/Alterations/Repairs						
Residential (\$000)	7.0	42.2	0.0	44.8	0.0	-100.0%
Nonresidential (\$000)	0.0	0.0	0.0	0.0	0.0	na
Total (\$000)	295.8	570.4	299.7	112.0	518.1	362.6%
Clarkston						
New Dwelling Units	2	6	2	0	3	#DIV/0!
New Residential (\$000)	142.4	688.0	247.1	0.0	446.8	#DIV/0!
New Nonresidential(\$000)	9.8	26.3	52.6	204.4	51.5	-74.8%
Additions/Alterations/Repairs						
Residential (\$000)	11.4	84.8	0.0	44.8	109.0	143.3%
Nonresidential (\$000)	0.0	0.0	0.0	0.0	0.0	na
Total (\$000)	163.6	797.1	299.7	249.2	607.3	143.7%
Cornish						
New Dwelling Units	2	1	0	0	1	na
New Residential (\$000)	207.1	61.6	0.0	0.0	102.0	na
New Nonresidential(\$000)	9.4	211.9	0.0	0.0	13.4	na
Additions/Alterations/Repairs						
Residential (\$000)	0.0	0.0	0.0	5.0	12.7	154.0%
Nonresidential (\$000)	0.0	0.0	0.0	0.0	0.0	na
Total (\$000)	216.5	273.5	0.0	5.0	128.1	2462.0%
Hyde Park						
New Dwelling Units	26	21	12	17	36	111.8%
New Residential (\$000)	3,517.3	3,014.2	1,812.7	2,901.4	5,774.8	99.0%
New Nonresidential(\$000)	1,149.2	742.3	2,565.8	1,048.2	360.9	-65.6%
Additions/Alterations/Repairs						
Residential (\$000)	379.8	349.6	380.7	181.1	694.0	283.2%
Nonresidential (\$000)	0.0	15.2	39.0	362.4	7.0	-98.1%
Total (\$000)	5,046.3	4,121.3	4,798.2	4,493.1	6,836.7	52.2%
Source: University of Utah, Bureau of Economic and Business Research.						

Cache County Permit-Authorized Construction 1999-2003

	1999	2000	2001	2002	2003	% Change 2002-2003
Hyrum						
New Dwelling Units	103	85	35	41	55	34.1%
New Residential (\$000)	10,477.6	9,189.8	4,650.4	4,366.9	5,671.6	29.9%
New Nonresidential(\$000)	1,851.6	1,323.7	1,425.2	901.5	1,666.4	84.8%
Additions/Alterations/Repairs						
Residential (\$000)	302.6	71.4	188.1	329.5	311.1	-5.6%
Nonresidential (\$000)	166.5	0.0	50.0	3.0	0.0	-100.0%
Total (\$000)	12,798.3	10,584.9	6,313.7	5,600.9	7,649.1	36.6%
Lewiston						
New Dwelling Units	9	3	0	1	5	400.0%
New Residential (\$000)	1,033.4	277.3	0.0	248.5	1,116.1	349.1%
New Nonresidential(\$000)	545.6	13.5	0.0	4.8	161.0	3254.2%
Additions/Alterations/Repairs						
Residential (\$000)	148.4	2.6	0.0	2.0	95.7	4685.0%
Nonresidential (\$000)	0.0	0.0	0.0	8.7	0.0	-100.0%
Total (\$000)	1,727.4	293.4	0.0	264.0	1,372.8	420.0%
Logan						
New Dwelling Units	175	140	370	190	301	58.4%
New Residential (\$000)	19,138.8	13,198.5	29,070.8	20,976.7	29,739.2	41.8%
New Nonresidential(\$000)	20,790.1	20,009.3	18,903.1	23,888.7	28,892.4	20.9%
Additions/Alterations/Repairs						
Residential (\$000)	1,181.8	911.9	1,233.3	1,563.2	1,333.6	-14.7%
Nonresidential (\$000)	21,477.0	10,325.2	7,203.3	9,175.5	17,497.6	90.7%
Total (\$000)	62,587.7	44,444.9	56,410.5	55,604.1	77,462.8	39.3%
Mendon						
New Dwelling Units	19	6	4	5	0	na
New Residential (\$000)	2,785.9	793.8	578.7	817.7	0.0	na
New Nonresidential(\$000)	2.5	1,899.3	0.0	0.0	0.0	na
Additions/Alterations/Repairs						na
Residential (\$000)	89.3	40.0	0.0	0.0	0.0	na
Nonresidential (\$000)	2.0	0.0	0.0	0.0	0.0	na
Total (\$000)	2,879.7	2,733.1	578.7	817.7	0.0	na
Milville						
New Dwelling Units	13	5	5	8	16	100.0%
New Residential (\$000)	1,396.8	539.4	536.9	1,170.2	1,978.3	69.1%
New Nonresidential(\$000)	46.0	1,404.3	47.1	54.5	1,203.4	2108.1%
Additions/Alterations/Repairs						
Residential (\$000)	77.4	29.3	78.9	181.7	102.1	-43.8%
Nonresidential (\$000)	0.0	0.0	0.0	0.0	0.0	na
Total (\$000)	1,520.2	1,973.0	662.9	1,406.4	3,283.8	133.5%

Source: University of Utah, Bureau of Economic and Business Research.

Cache County Permit-Authorized Construction 1999-2003

	1999	2000	2001	2002	2003	% Change 2002-2003
Newton						
New Dwelling Units	0	3	0	1	0	na
New Residential (\$000)	0.0	270.9	0.0	175.0	0.0	na
New Nonresidential(\$000)	0.0	0.0	0.0	28.0	0.0	na
Additions/Alterations/Repairs						
Residential (\$000)	0.0	0.0	0.0	0.0	0.0	na
Nonresidential (\$000)	0.0	0.0	0.0	0.0	0.0	na
Total (\$000)	0.0	270.9	0.0	203.0	0.0	na
Nibley						
New Dwelling Units	65	22	30	52	116	123.1%
New Residential (\$000)	6,564.7	4,139.4	3,271.3	5,857.9	13,308.1	127.2%
New Nonresidential(\$000)	215.3	68.0	68.8	60.0	1,576.6	2527.7%
Additions/Alterations/Repairs						
Residential (\$000)	27.0	312.7	159.8	9.6	220.0	2191.7%
Nonresidential (\$000)	0.0	54.5	0.0	0.0	25.8	na
Total (\$000)	6,807.0	4,574.6	3,499.9	5,927.5	15,130.5	155.3%
North Logan						
New Dwelling Units	28	147	48	32	8	-75.0%
New Residential (\$000)	6,309.7	10,818.1	11,160.5	6,104.6	1,075.6	-82.4%
New Nonresidential(\$000)	4,709.3	7,252.6	5,956.4	264.4	2,086.3	689.1%
Additions/Alterations/Repairs						
Residential (\$000)	231.9	187.0	112.5	0.0	36.2	na
Nonresidential (\$000)	178.4	529.4	435.9	787.0	500.6	-36.4%
Total (\$000)	11,429.3	18,787.1	17,665.3	7,156.0	3,698.7	-48.3%
Paradise						
New Dwelling Units	8	6	6	9	4	-55.6%
New Residential (\$000)	1,111.0	843.4	991.0	1,295.5	601.6	-53.6%
New Nonresidential(\$000)	45.2	55.8	67.8	51.2	43.5	-15.0%
Additions/Alterations/Repairs						
Residential (\$000)	16.4	38.4	31.7	57.3	115.0	100.7%
Nonresidential (\$000)	0.0	0.0	0.0	0.0	0.0	na
Total (\$000)	1,172.6	937.6	1,090.5	1,404.0	790.1	-43.7%
Providence						
New Dwelling Units	52	73	112	108	111	2.8%
New Residential (\$000)	5,106.6	6,918.6	11,641.4	12,590.6	14,910.3	18.4%
New Nonresidential(\$000)	914.3	596.3	262.9	1,092.2	151.5	-86.1%
Additions/Alterations/Repairs						
Residential (\$000)	578.9	361.2	332.9	341.3	429.9	26.0%
Nonresidential (\$000)	0.0	15.0	115.0	36.0	77.6	115.6%
Total (\$000)	6,599.8	7,891.1	12,352.2	14,060.1	15,569.3	10.7%

Source: University of Utah, Bureau of Economic and Business Research.

Cache County Permit-Authorized Construction 1999-2003

	1999	2000	2001	2002	2003	% Change 2002-2003
Richmond						
New Dwelling Units	10	9	10	15	15	0.0%
New Residential (\$000)	1,097.5	1,184.8	1,373.1	1,887.6	1,774.9	-6.0%
New Nonresidential(\$000)	106.7	278.3	367.4	939.2	265.1	-71.8%
Additions/Alterations/Repairs						
Residential (\$000)	78.8	166.1	121.7	69.7	157.8	126.4%
Nonresidential (\$000)	45.2	32.0	1.5	0.0	1.5	na
Total (\$000)	1,328.2	1,661.2	1,863.7	2,896.5	2,199.3	-24.1%
River Heights						
New Dwelling Units	19	12	3	7	6	-14.3%
New Residential (\$000)	2,383.7	1,475.0	379.4	997.0	1,217.7	22.1%
New Nonresidential(\$000)	16.6	23.0	60.5	147.7	95.6	-35.3%
Additions/Alterations/Repairs						
Residential (\$000)	260.5	30.8	27.5	136.1	128.8	-5.4%
Nonresidential (\$000)	0.0	0.0	0.0	0.0	0.0	na
Total (\$000)	2,660.8	1,528.8	1,007.4	1,280.8	1,439.1	12.4%
Smithfield						
New Dwelling Units	92	64	72	64	71	10.9%
New Residential (\$000)	12,680.2	8,934.3	9,256.6	9,467.7	10,977.4	15.9%
New Nonresidential(\$000)	3,038.0	1,242.3	470.3	2,358.0	1,832.0	-22.3%
Additions/Alterations/Repairs						
Residential (\$000)	66.3	186.9	313.7	179.9	244.0	35.6%
Nonresidential (\$000)	18.7	1.4	179.9	191.8	48.3	-74.8%
Total (\$000)	13,069.0	10,364.9	10,220.5	12,197.4	13,101.7	7.4%
Trenton						
New Dwelling Units	3	4	3	2	1	-50.0%
New Residential (\$000)	146.9	354.4	198.6	40.0	41.1	2.8%
New Nonresidential(\$000)	70.7	250.2	0.0	0.0	3.0	na
Additions/Alterations/Repairs						na
Residential (\$000)	0.0	16.7	125.9	21.7	0.0	na
Nonresidential (\$000)	0.0	0.0	0.0	0.0	0.0	na
Total (\$000)	217.6	621.3	324.5	61.7	44.1	-28.5%
Wellsville						
New Dwelling Units	16	20	16	17	23	35.3%
New Residential (\$000)	2,170.7	2,363.5	2,314.7	2,151.8	3,595.1	67.1%
New Nonresidential(\$000)	591.8	331.7	389.0	768.8	1,916.4	149.3%
Additions/Alterations/Repairs						
Residential (\$000)	30.0	70.1	187.0	210.2	348.9	66.0%
Nonresidential (\$000)	0.0	0.0	0.0	97.5	31.8	-67.4%
Total (\$000)	2,792.5	2,765.3	2,890.7	3,228.3	5,892.2	82.5%
Other Cache County						
New Dwelling Units	91	60	42	44	56	27.3%
New Residential (\$000)	11,921.9	8,498.0	5,325.9	6,374.9	8,556.6	34.2%
New Nonresidential(\$000)	1,565.4	1,445.8	4,979.9	3,091.5	2,142.2	-30.7%
Additions/Alterations/Repairs						
Residential (\$000)	263.9	533.8	120.0	465.9	258.1	-44.6%
Nonresidential (\$000)	0.0	0.0	0.0	4.0	5.0	25.0%
Total (\$000)	13,751.2	10,477.6	10,425.8	9,936.3	10,961.9	10.3%

Source: University of Utah, Bureau of Economic and Business Research.

Cache County Gross Taxable Sales

1998-2003

Standard Industrial Classification	1999	2000	2001	2002	2003	%Change 2002-2003
Agriculture, Forestry & Fishing	\$763,725	\$823,962	\$778,869	\$853,442	\$809,335	65%
Mining	1,468,737	2,012,207	2,095,818	1,377,511	n/a	-100.0%
Construction	17,123,965	14,192,237	20,363,639	16,759,072	14,613,867	-12.8%
Manufacturing	46,450,593	40,217,977	42,041,837	43,242,681	49,874,675	15.3%
Transportation	8,107,882	4,755,237	4,784,546	5,823,907	2,348,567	-59.7%
Communications	29,446,792	32,561,204	35,997,066	55,744,144	45,595,214	-18.2%
Electric & Gas	20,286,434	5,377,541	n/a	32,679,684	30,825,671	-5.7%
Wholesale - Durable Goods	45,475,945	47,326,614	44,372,122	45,426,067	49,254,348	8.4%
Wholesale - Non-durable Goods	13,745,066	13,202,553	13,068,689	14,593,551	15,995,231	9.6%
Total Wholesale Trade Sales	59,221,001	60,529,167	57,430,811	60,019,618	65,249,579	8.7%
Retail - Building and Garden Stores	53,216,429	52,433,346	58,281,566	65,556,102	71,284,483	8.7%
Retail - General Merchandise Stores	96,704,014	99,906,877	114,137,666	161,683,994	182,130,411	12.6%
Retail - Food Stores	140,564,751	143,431,738	138,847,097	103,721,697	99,688,179	-3.9%
Retail - Motor Vehicle Dealers	74,881,613	82,711,765	82,371,307	83,544,517	83,131,080	-0.5%
Retail - Apparel & Accessory Stores	27,786,237	26,299,874	21,642,164	20,281,193	26,099,450	28.7%
Retail - Furniture Stores	45,866,984	46,274,900	38,181,052	38,390,554	40,706,252	6.0%
Retail - Eating & Drinking	52,201,878	55,889,824	57,124,584	58,805,994	60,308,213	2.6%
Retail - Miscellaneous	48,586,102	52,517,491	62,888,065	65,290,554	69,320,384	6.2%
Total Retail Trade Sales	539,807,968	559,465,815	573,483,530	597,274,605	632,668,452	5.9%
Finance, Insurance, Real Estate	6,806,331	9,843,864	7,470,715	8,499,238	11,258,378	32.5%
Services - Hotels & Lodging	7,118,592	6,176,545	5,970,880	6,987,530	6,381,761	-8.7%
Services - Personal	4,699,727	4,723,726	5,112,420	4,654,018	4,686,229	0.9%
Services - Business	17,705,368	17,307,628	19,235,673	18,212,008	17,193,332	-5.6%
Services - Auto & Mec. Repair	37,483,626	37,160,112	39,514,575	45,337,973	46,216,171	1.9%
Services - Amusement & Recreation	13,203,518	13,311,260	14,436,623	17,440,411	17,205,844	-1.3%
Services - Health	2,278,328	2,723,255	2,792,568	2,756,864	3,776,209	37.0%
Services - Education, Legal, Social	2,530,325	2,612,098	9,175,770	14,584,649	14,808,926	1.5%
Total Service Sales	85,019,474	84,014,624	96,238,509	109,973,453	110,278,472	0.3%
Public Administration	11,032,862	10,880,918	14,239,898	15,745,377	17,504,957	11.2%
Private Motor Vehicle Sales	22,825,060	26,074,419	27,386,294	26,587,772	31,784,665	19.5%
Occasional Retail Sales	1,117,207	292,219	1,713,481	1,109,485	1,209,852	9.0%
Nonclassifiable or Nonclassifiable	5,036,949	22,963,360	35,064,347	1,816,976	1,811,472	-0.3%
Prior Period Payments/Refunds/Adjustments	23,001,295	7,763,898	17,465,183	14,366,305	14,053,875	-2.2%
Total	\$877,516,245	\$881,748,639	\$986,524,543	\$991,873,325	\$1,029,987,061	3.8%

Source: Utah State Tax Commission

This is a web-only publication. If a hard copy is desired, please print one from the following website:

<http://jobs.utah.gov/wi>

Click on "State, County, and Local Information" then "Cache County"

All our publications, and other information, are available on our website:

<http://jobs.utah.gov/wi>

For more information, contact:

Regional Economist

Phone #

email@utah.gov

Workforce Information generates accurate, timely, and understandable data and analyses to provide knowledge of ever-changing workforce environments that inform sound planning and decision-making.

Utah!

Where ideas connect™



Equal Opportunity Employment Program

Auxiliary aids and services are available upon request to individuals with disabilities. Call (801) 526-9240. Individuals with speech and/or hearing impairments may call the state relay at 1-800-346-4128



