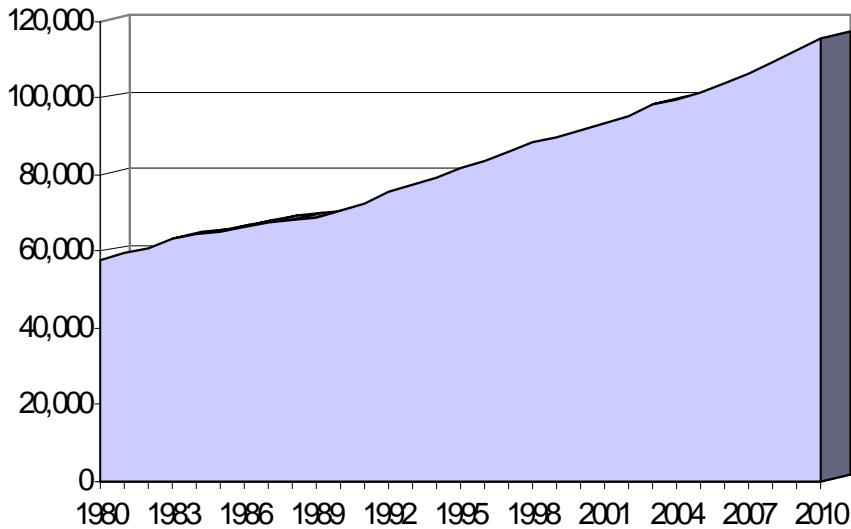


Population Profile

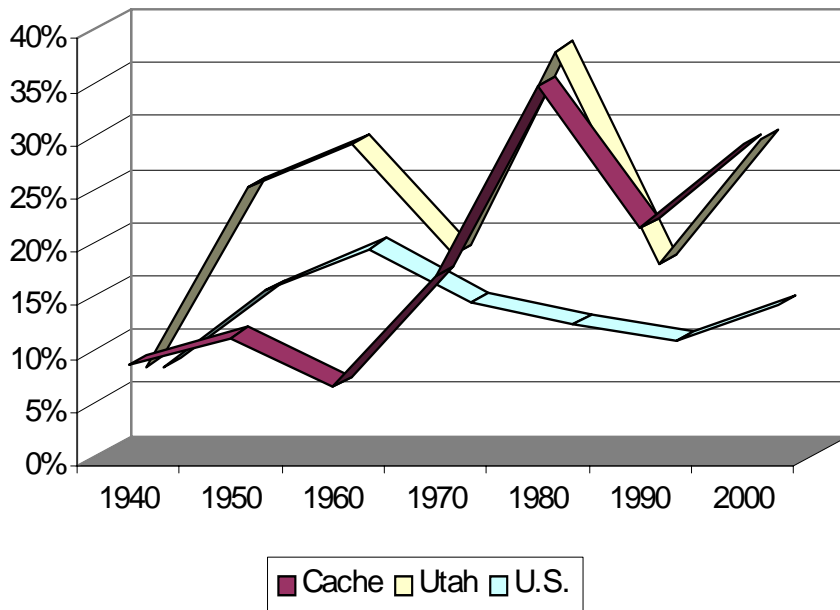
Cache Population



Steady growth throughout the 1990's added over 28,000 to the county's population through 2003.

Source: Utah Governor's Office of Planning and Budget.

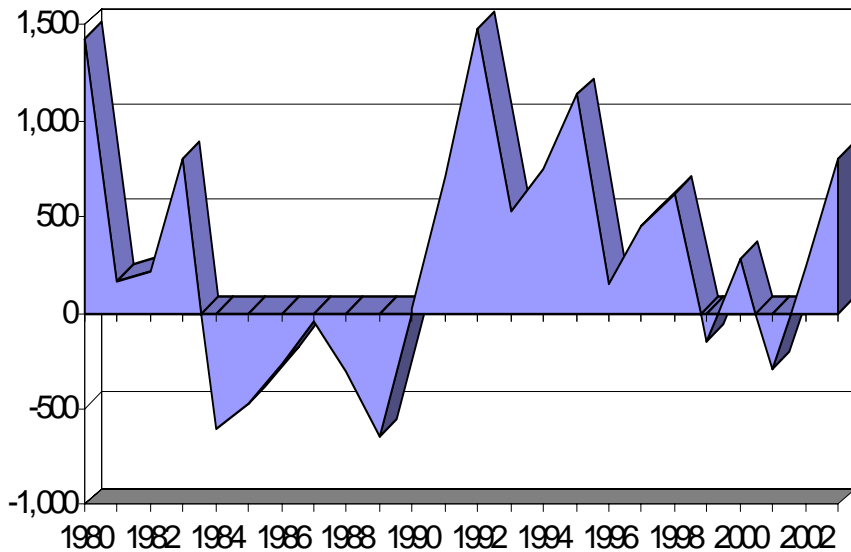
Population Change



Since 1970 the county has followed the state's growth pattern in population. Both Utah and Cache are growing at rates significantly higher than the nation.

Source: U.S. Census Bureau.

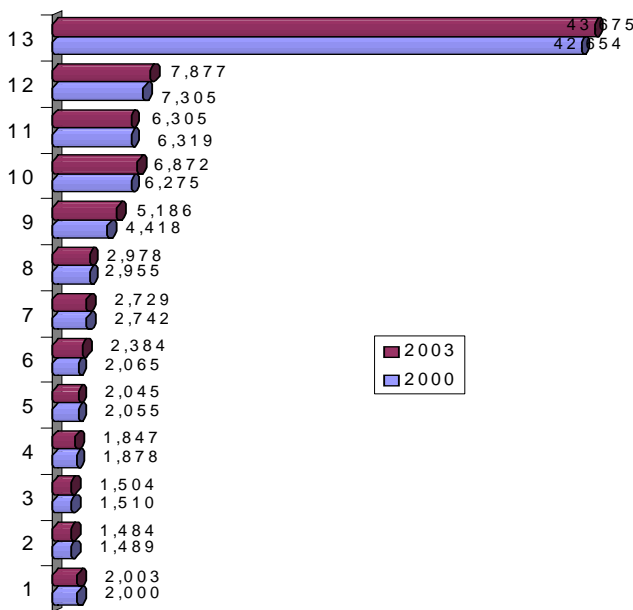
Cache Net-Migration



During the growth years, the county increased its population from both the natural increase in population and from persons moving in to take new jobs caused by economic growth.

Source: Utah Governor's Office of Planning and Budget.

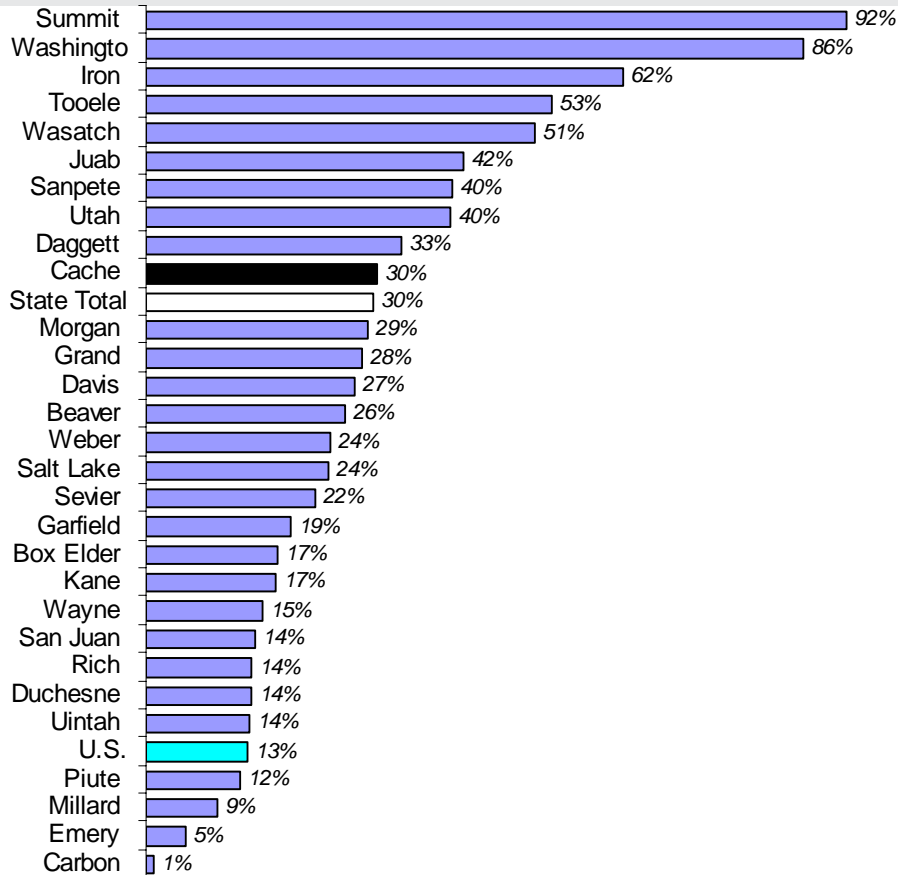
Cache Population by City



Logan City, by far, is the largest city in the county. Between 2000 and 2003, six of these cities actually lost population.

Source: 2000—U.S. Census Bureau; 2002 Estimates—Utah Governor's Office of Planning and Budget.

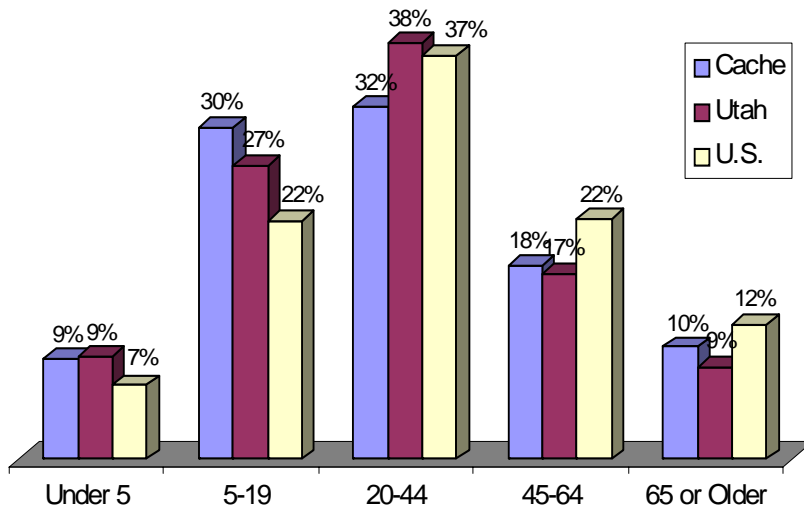
1990 to 2000 Population Growth by County



Cache ranked in the top ten fastest growing counties in the state increasing its population by 30 percent. The nation grew by only 13 percent over the ten year period.

Source: U.S. Census Bureau.

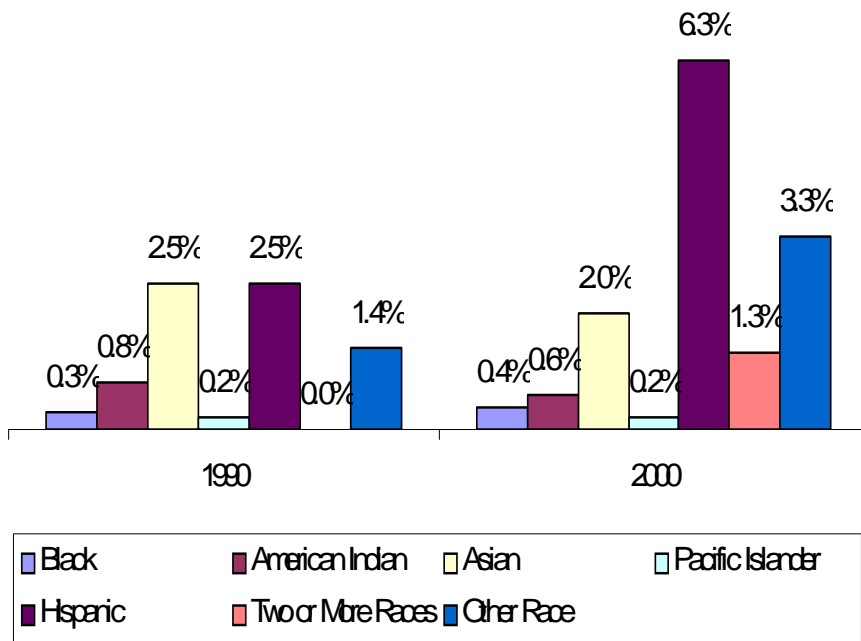
2000 Population Age Distribution



Cache County has more younger persons than the state or the nation, at least through age 19. After that the county trails both Utah state and the U.S. in the proportion of persons in the older age groups.

Source: U.S. Census Bureau.

Cache Race/Ethnic Distribution

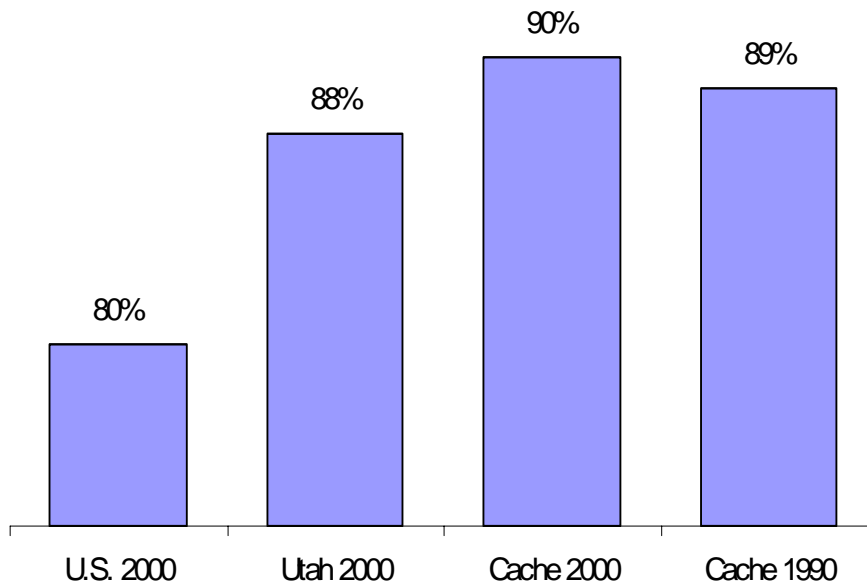


The proportion of Hispanics in Cache County has more than doubled since 1990. Most other groups have remained about the same in terms of their percent of the total population over the last ten years.

Source: U.S. Census Bureau.

NOTE: For Census 2000, the U.S. Census Bureau changed the way it collected race and ethnic information. Respondents were able to check as many racial groups as applied and also to indicate "other." As used by the Census Bureau, "Hispanic" or Latino is an ethnic designation rather than a racial category. This is a self-designated classification for people whose origins are from Spain, the Spanish-speaking countries of Central or South America, the Caribbean, or people identifying themselves as Spanish, Spanish-American, etc. That origin can be viewed as ancestry, nationality, or country of birth of the person or person's parents or ancestors prior to their arrival in the United States. Hispanics or Latinos can be of any racial background.

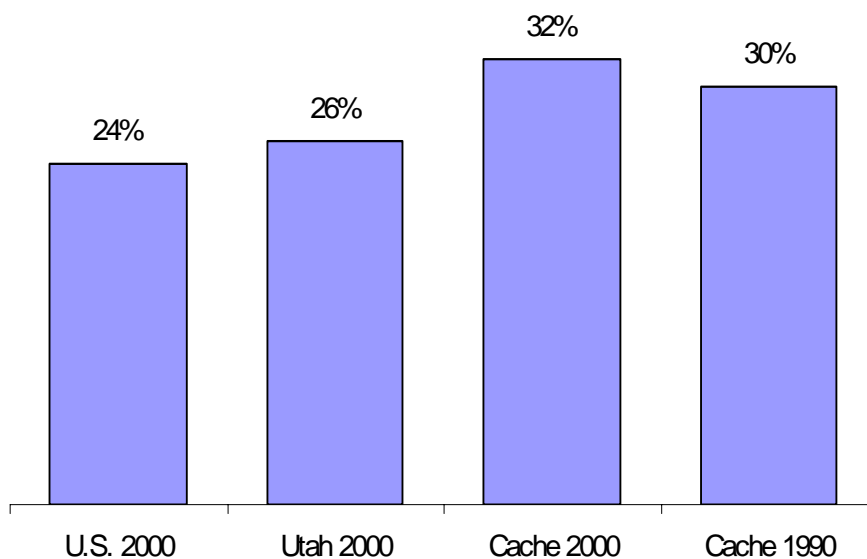
Adults With at Least a High School Diploma*



Cache County had a higher percentage of high school graduates than the state in both 1990 and in 2000, and a full 10 percent more of its residents had diplomas relative to the national average of 80 percent.

* Population 25 years and older.
Source: U.S. Census Bureau.

Adults With at Least a Bachelor's Degree*



Nearly one-third of persons 25 and older in Cache County had attained at least a Bachelor's Degree when only about a quarter of the population at the state and national level held degrees. One reason for the difference is the presence of Utah State University.

* Population 25 years and older.
Source: U.S. Census Bureau.